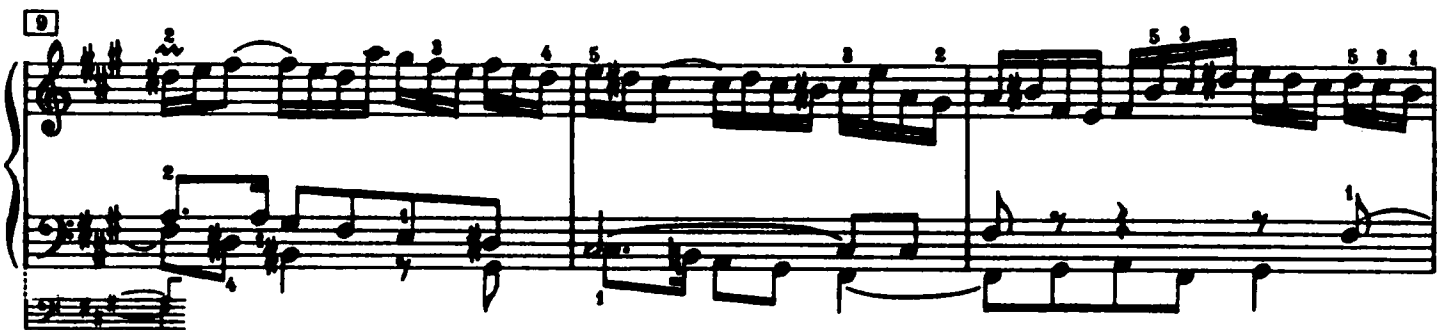
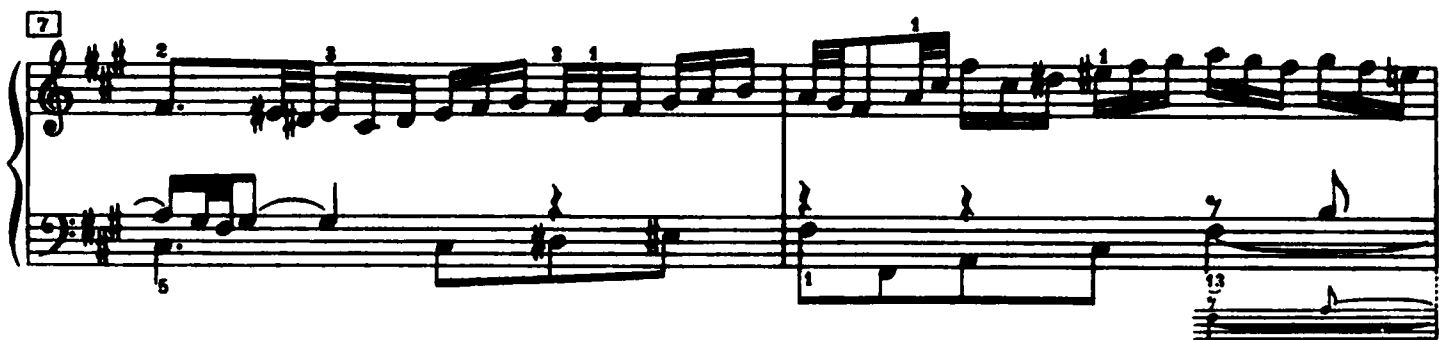
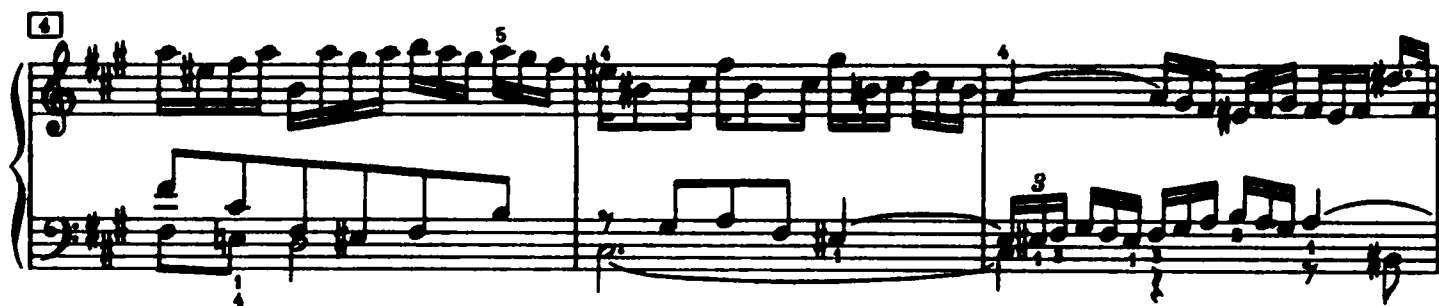
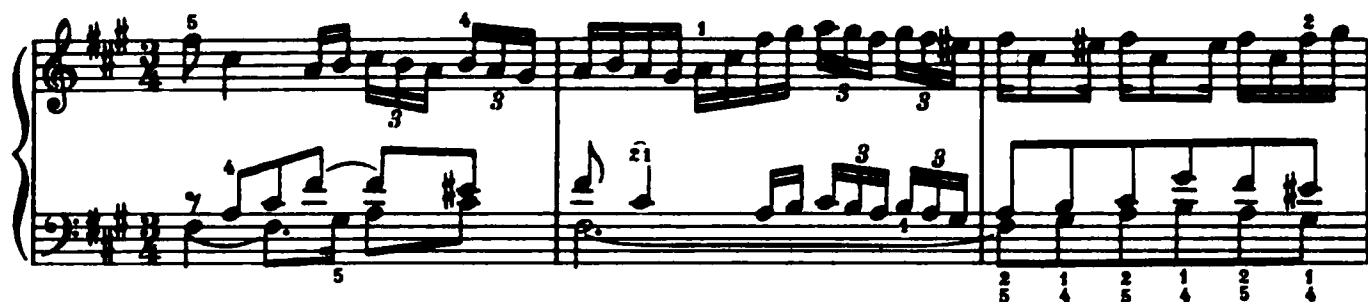


Praeludium XIV



15

Measures 15-17 of a musical score in D major. The right hand features a complex melodic line with many triplets and sixteenth notes. The left hand provides a steady accompaniment with eighth and sixteenth notes. Fingering numbers (1-5) are indicated throughout. Measure numbers 15, 16, and 17 are shown at the beginning of their respective staves.

18

Measures 18-20 of the musical score. The right hand continues with intricate melodic patterns, including a triplet in measure 19. The left hand has a more active role with sixteenth-note runs. Fingering is clearly marked. Measure numbers 18, 19, and 20 are indicated.

21

Measures 21-23 of the musical score. The right hand features a triplet in measure 22. The left hand has a more active role with sixteenth-note runs. Fingering is clearly marked. Measure numbers 21, 22, and 23 are indicated.

24

Measures 24-26 of the musical score. The right hand features a triplet in measure 25. The left hand has a more active role with sixteenth-note runs. Fingering is clearly marked. Measure numbers 24, 25, and 26 are indicated.

27

Measures 27-29 of the musical score. The right hand features a triplet in measure 28. The left hand has a more active role with sixteenth-note runs. Fingering is clearly marked. Measure numbers 27, 28, and 29 are indicated.

20

Handwritten musical score for 'The Rose Tree'. The score is written on two staves, Treble and Bass clef, in G major (one sharp) and 2/4 time. The melody is in the Treble staff, and the accompaniment is in the Bass staff. The piece consists of 20 measures, divided into four measures per system. The melody features various rhythmic patterns, including eighth and sixteenth notes, and rests. The accompaniment provides a steady bass line with some harmonic support. The score is marked with fingerings (1-5) and includes a repeat sign at the end.

88

(h)

4

5

4

2

36

1 3 4 3 1

5 4 3 2 1

21 45 2 4 1 5

39

2 3 5 3 1

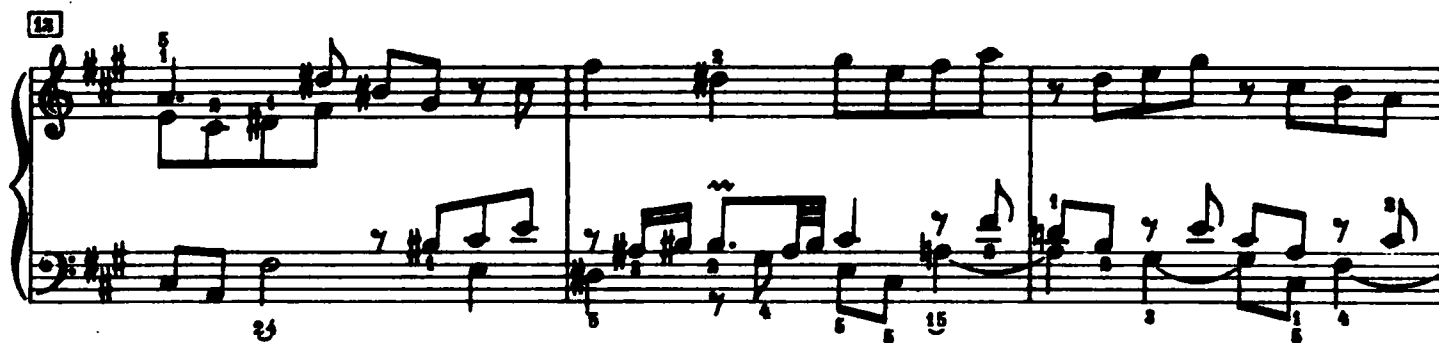
5

41

Handwritten musical score for 'The Rose Tree'. The score is written on two staves, Treble and Bass clef, with a key signature of one sharp (F#). The melody is in the Treble clef, and the bass line is in the Bass clef. The piece is marked with a '41' in a box at the beginning. The melody features a series of eighth and sixteenth notes, with some measures containing multiple notes beamed together. The bass line consists of a simple harmonic accompaniment with quarter and eighth notes. The piece ends with a final chord in the Treble clef.

Fuga XIV

a 3 Voci



19

19

22

22

25

25

28

28

31

31

34

34

[37]

Measures 37-39 of a musical score in D major. The right hand features a complex melodic line with many beamed sixteenth and thirty-second notes, including triplets and slurs. The left hand provides a steady accompaniment with eighth and sixteenth notes. Fingering numbers (1-5) are indicated above and below notes throughout the system.

[40]

Measures 40-42 of the musical score. The right hand continues with intricate melodic patterns, including slurs and ties. The left hand maintains a rhythmic accompaniment. Fingering is clearly marked for both hands.

[43]

Measures 43-45 of the musical score. The right hand shows a mix of eighth and sixteenth notes with various slurs. The left hand has a more active role with beamed sixteenth notes. Fingering numbers are present for both parts.

[46]

Measures 46-48 of the musical score. The right hand features a melodic line with a prominent slur across measures 47 and 48. The left hand has a simpler accompaniment with some ties. Fingering is indicated.

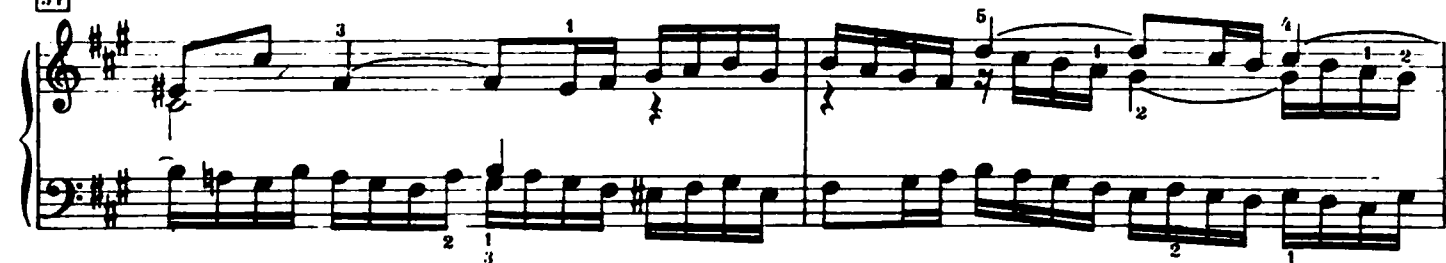
[48]

Measures 49-51 of the musical score. The right hand has a more complex texture with many beamed notes and slurs. The left hand provides a steady accompaniment. Fingering numbers are visible.

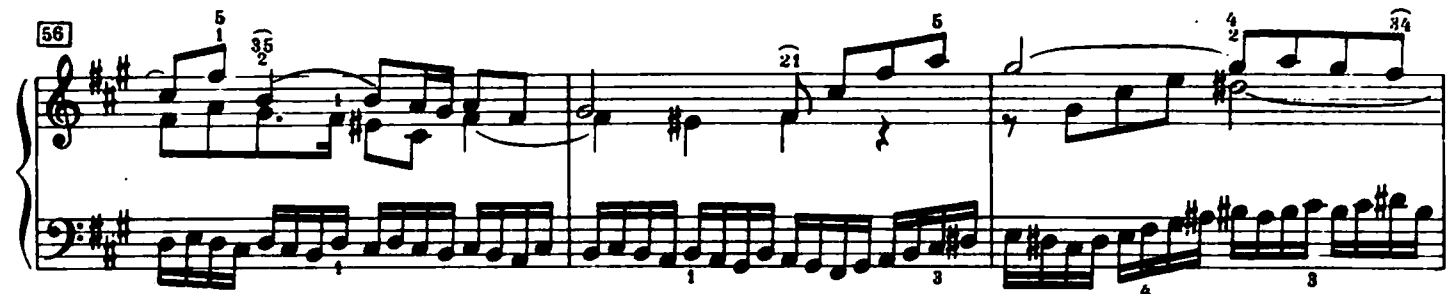
[51]

Measures 52-54 of the musical score. The right hand continues with a melodic line featuring slurs and ties. The left hand has a rhythmic accompaniment with some beamed notes. Fingering is indicated for both hands.

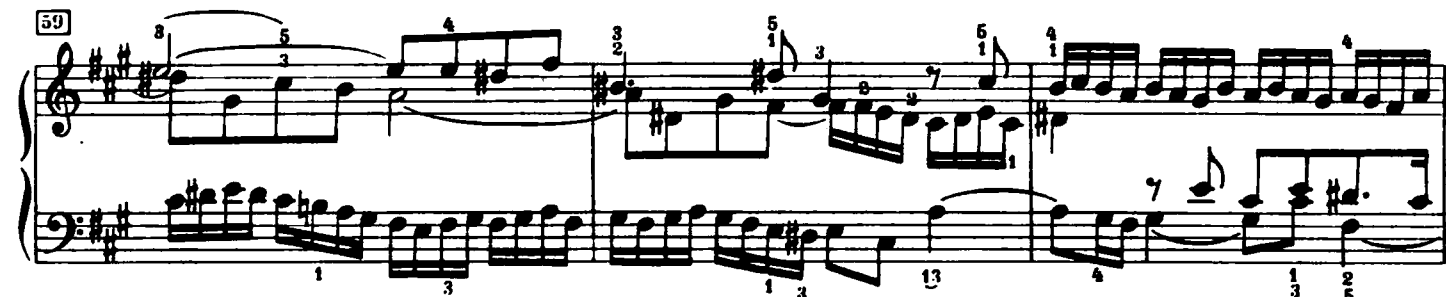
51



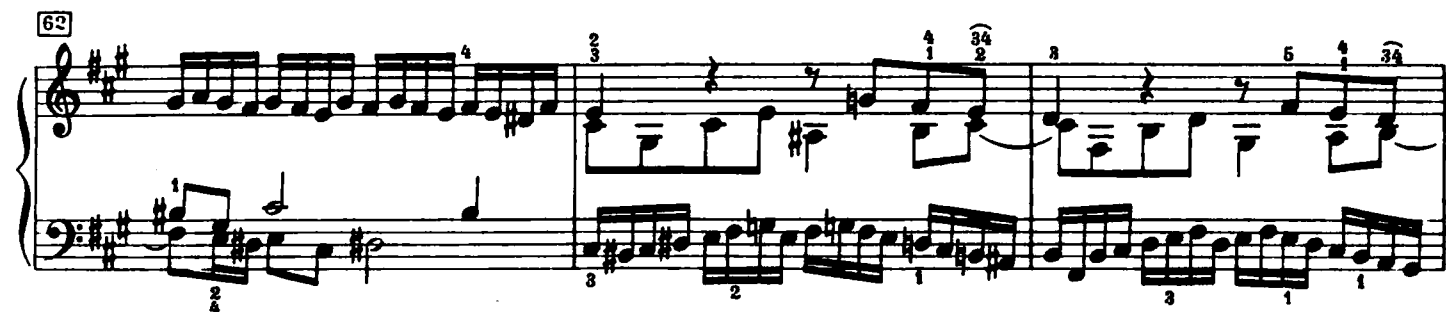
56



59



62



65



68

