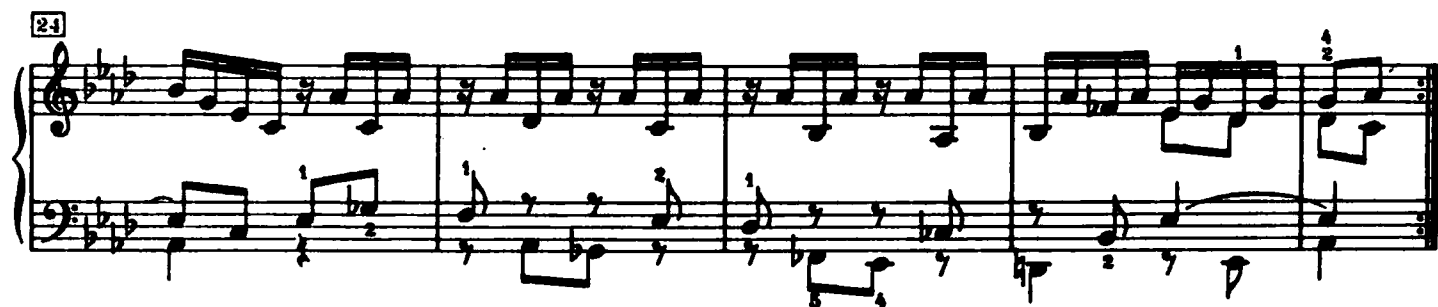
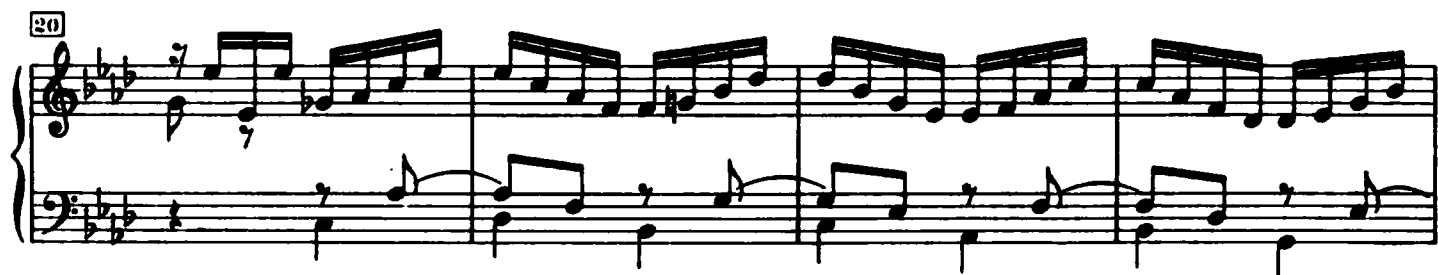


## Praeludium XII



85

This block contains measures 85 through 88 of the musical score. The notation continues on two staves. Measure 85 features a treble staff with a series of eighth and sixteenth notes and a bass staff with a single note. Measure 86 has a treble staff with eighth notes and a bass staff with a half note. Measure 87 shows a treble staff with eighth notes and a bass staff with a half note. Measure 88 concludes the piece with a treble staff ending in a double bar line and a bass staff with a half note.

## Fuga XII

**a 3 Voci**

Musical score for "The Rose Tree" in 2/4 time, featuring a treble and bass staff. The key signature is three flats (B-flat, E-flat, A-flat). The melody is written in the treble staff, and the bass staff provides a simple accompaniment. The score includes a key signature change from three flats to two flats (B-flat, E-flat) in the second measure. The melody consists of eighth and sixteenth notes, with some measures containing slurs and fingerings (1, 2). The bass staff has a few notes and rests, including a triplet of eighth notes in the fourth measure.

Exercise 5, measures 1-4. The notation shows a treble and bass staff in B-flat major. Measure 1: Treble has a half note G4, quarter notes A4, B4, C5, D5, E5, F5, G5; Bass has a half note B2, quarter notes C3, D3, E3, F3, G3, A3, B3. Measure 2: Treble has a half note A4, quarter notes B4, C5, D5, E5, F5, G5, A5; Bass has a half note C3, quarter notes D3, E3, F3, G3, A3, B3, C4. Measure 3: Treble has a half note B4, quarter notes C5, D5, E5, F5, G5, A5, B5; Bass has a half note D3, quarter notes E3, F3, G3, A3, B3, C4, D4. Measure 4: Treble has a half note C5, quarter notes D5, E5, F5, G5, A5, B5, C6; Bass has a half note E3, quarter notes F3, G3, A3, B3, C4, D4, E4. Fingering numbers 1-5 are indicated above and below notes.

[illegible]

13

Musical score for Exercise 13, featuring a treble and bass staff with various musical notations including notes, rests, and fingerings.

Exercise 17, measures 1-4. The music is in 3/4 time, key of B-flat major (two flats). The right hand features a melody with eighth and sixteenth notes, while the left hand provides a bass line with eighth and sixteenth notes. Measure 1 includes a fingering '2' above the first note and a '1' below the second note. Measure 4 includes a fingering '4' below the first note and a '1' below the second note. Measure 5 includes a fingering '5' below the first note and a '1' below the second note. Measure 6 includes a fingering '4' below the first note and a '1' below the second note.

21

1 4 1 4 1 4

1 2 3

25

25

30

30

35

35

40

40

45

45

50

50

55

Measures 55-59 of a piano piece. The key signature has two flats (B-flat and E-flat). The music features a complex interplay between the right and left hands. The right hand includes triplets and sixteenth-note runs, while the left hand provides a steady accompaniment with eighth and sixteenth notes. Fingering numbers (1-5) are indicated throughout.

60

Measures 60-64. The musical texture continues with intricate fingerings and rhythmic patterns. The right hand has more melodic movement with slurs and ties, while the left hand maintains a consistent accompaniment. Measure 64 ends with a double bar line and a key signature change to one flat (F major or D minor).

65

Measures 65-69. The key signature is now one flat. The right hand features a series of slurred eighth notes, and the left hand has a more active role with sixteenth-note patterns. Measure 69 ends with a double bar line and a key signature change to natural (C major or A minor).

70

Measures 70-74. The music continues in C major/A minor. The right hand has a melodic line with some grace notes, and the left hand provides a rhythmic foundation. Measure 74 ends with a double bar line and a key signature change to two sharps (D major or B minor).

75

Measures 75-79. The key signature is two sharps. The right hand has a more active melodic line with slurs and ties, while the left hand continues with a steady accompaniment. Measure 79 ends with a double bar line and a key signature change to one sharp (E major or C# minor).

80

Measures 80-84. The key signature is one sharp. The right hand features a melodic line with a trill in measure 83, and the left hand provides a rhythmic accompaniment. Measure 84 ends with a double bar line and a key signature change to natural (C major or A minor).