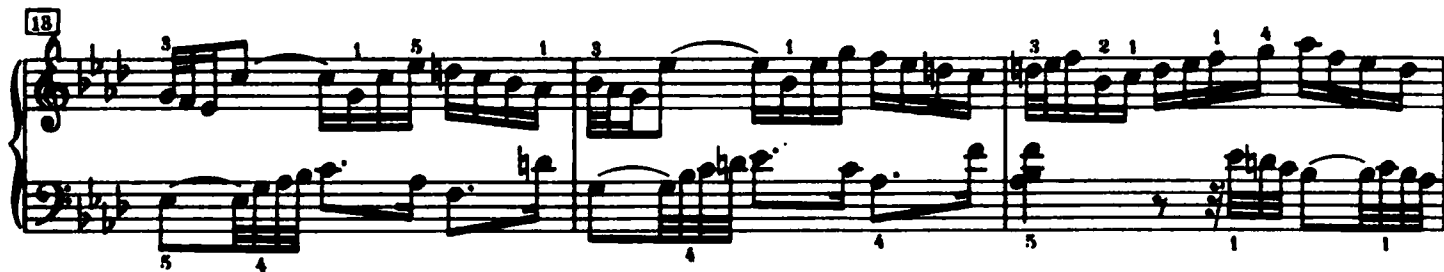
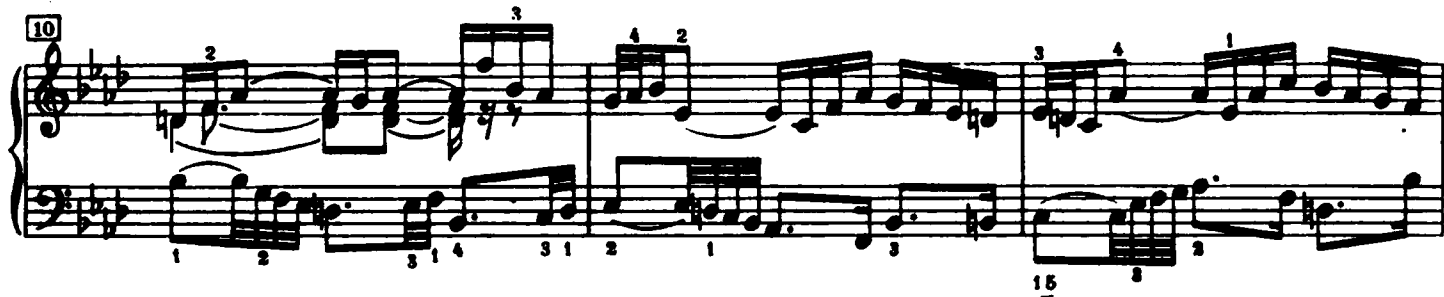
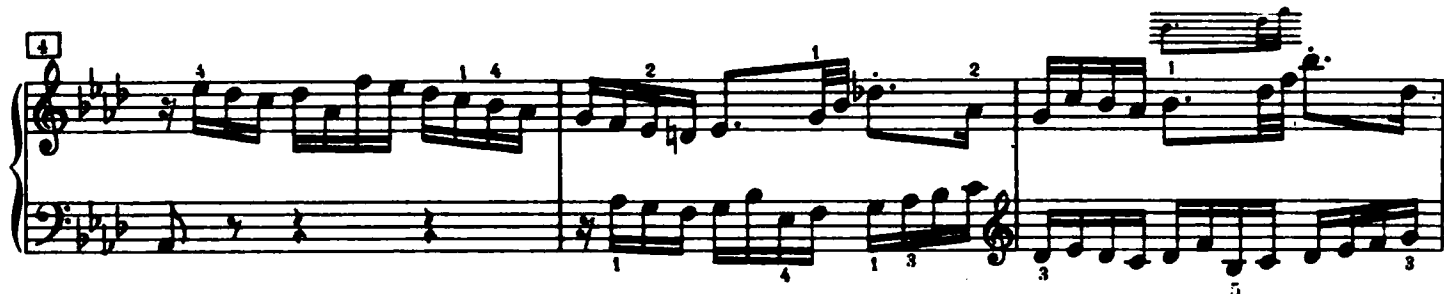


## Praeludium XVII



19

Measures 19-21. Treble staff: Measure 19 has a triplet of eighth notes (F4, G4, A4) and a quarter note (B4). Measure 20 has a quarter note (B4), an eighth note (A4), and a quarter note (G4). Measure 21 has a quarter note (F4), an eighth note (E4), and a quarter note (D4). Bass staff: Measure 19 has a quarter note (F3), an eighth note (G3), and a quarter note (A3). Measure 20 has a quarter note (B2), an eighth note (A2), and a quarter note (G2). Measure 21 has a quarter note (F2), an eighth note (E2), and a quarter note (D2). Fingering: 3, 5, 2, 1, 4, 2, 1, 2, 1, 3.

22

Measures 22-24. Treble staff: Measure 22 has a quarter note (F4), an eighth note (G4), and a quarter note (A4). Measure 23 has a quarter note (B4), an eighth note (A4), and a quarter note (G4). Measure 24 has a quarter note (F4), an eighth note (E4), and a quarter note (D4). Bass staff: Measure 22 has a quarter note (F3), an eighth note (G3), and a quarter note (A3). Measure 23 has a quarter note (B2), an eighth note (A2), and a quarter note (G2). Measure 24 has a quarter note (F2), an eighth note (E2), and a quarter note (D2). Fingering: 1, 4, 5, 3, 3, 1, 4, 3, 2, 1, 1, 1.

25

Measures 25-27. Treble staff: Measure 25 has a quarter note (F4), an eighth note (G4), and a quarter note (A4). Measure 26 has a quarter note (B4), an eighth note (A4), and a quarter note (G4). Measure 27 has a quarter note (F4), an eighth note (E4), and a quarter note (D4). Bass staff: Measure 25 has a quarter note (F3), an eighth note (G3), and a quarter note (A3). Measure 26 has a quarter note (B2), an eighth note (A2), and a quarter note (G2). Measure 27 has a quarter note (F2), an eighth note (E2), and a quarter note (D2). Fingering: 4, 1, 4, 3, 2, 1, 1, 1, 4, 1, 1, 4.

28

Measures 28-30. Treble staff: Measure 28 has a quarter note (F4), an eighth note (G4), and a quarter note (A4). Measure 29 has a quarter note (B4), an eighth note (A4), and a quarter note (G4). Measure 30 has a quarter note (F4), an eighth note (E4), and a quarter note (D4). Bass staff: Measure 28 has a quarter note (F3), an eighth note (G3), and a quarter note (A3). Measure 29 has a quarter note (B2), an eighth note (A2), and a quarter note (G2). Measure 30 has a quarter note (F2), an eighth note (E2), and a quarter note (D2). Fingering: 1, 1, 3, 4, 1, 5, 3, 1, 5, 3, 4, 4.

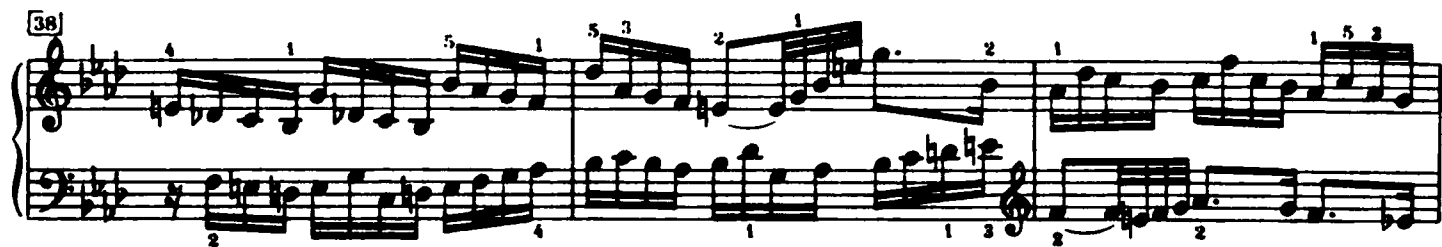
31

Measures 31-33. Treble staff: Measure 31 has a quarter note (F4), an eighth note (G4), and a quarter note (A4). Measure 32 has a quarter note (B4), an eighth note (A4), and a quarter note (G4). Measure 33 has a quarter note (F4), an eighth note (E4), and a quarter note (D4). Bass staff: Measure 31 has a quarter note (F3), an eighth note (G3), and a quarter note (A3). Measure 32 has a quarter note (B2), an eighth note (A2), and a quarter note (G2). Measure 33 has a quarter note (F2), an eighth note (E2), and a quarter note (D2). Fingering: 4, 4, 1, 1, 2, 3, 3, 3.

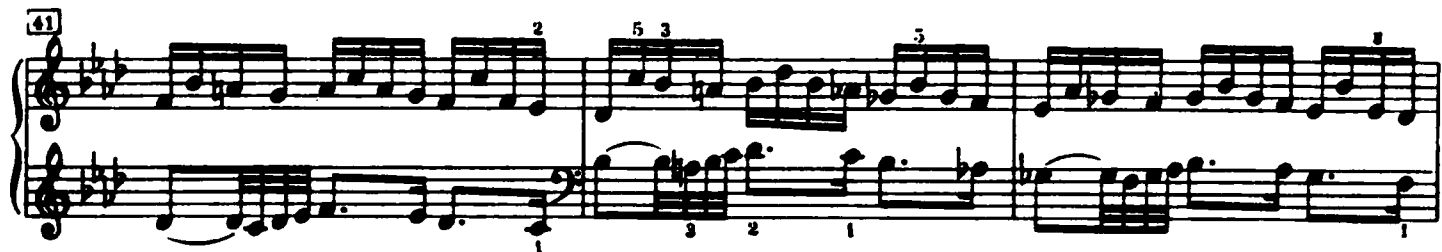
34

Measures 34-36. Treble staff: Measure 34 has a quarter note (F4), an eighth note (G4), and a quarter note (A4). Measure 35 has a quarter note (B4), an eighth note (A4), and a quarter note (G4). Measure 36 has a quarter note (F4), an eighth note (E4), and a quarter note (D4). Bass staff: Measure 34 has a quarter note (F3), an eighth note (G3), and a quarter note (A3). Measure 35 has a quarter note (B2), an eighth note (A2), and a quarter note (G2). Measure 36 has a quarter note (F2), an eighth note (E2), and a quarter note (D2). Fingering: 3, 5, 2, 1, 4, 2, 1, 4, 5, 2, 1, 4.

[38]



[41]



[44]



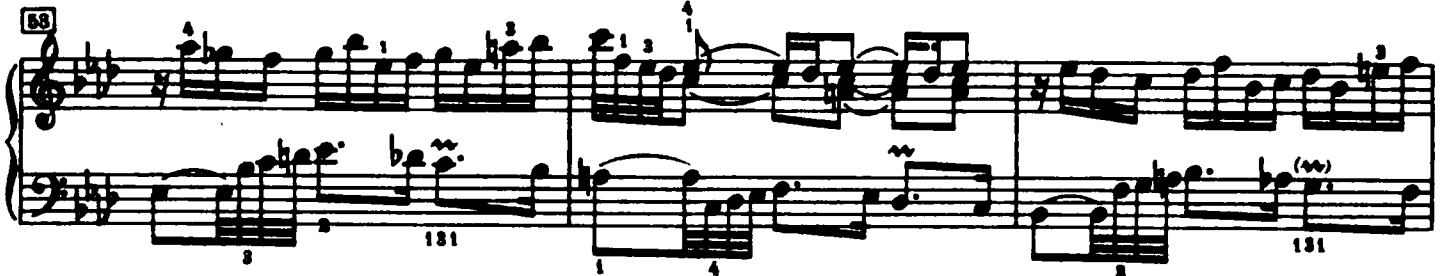
[47]



[50]



[53]



[56]



69

Measures 69-71 of a piano piece. The key signature has three flats (B-flat, E-flat, A-flat). Measure 69 features a complex right-hand melody with sixteenth-note runs and a left-hand accompaniment with eighth-note patterns. Measure 70 continues the right-hand melody with a triplet and a left-hand accompaniment with a wavy line indicating a tremolo. Measure 71 shows a right-hand melody with a triplet and a left-hand accompaniment with eighth-note patterns. Fingering numbers are provided for many notes.

72

Measures 72-74 of a piano piece. Measure 72 features a right-hand melody with a triplet and a left-hand accompaniment with eighth-note patterns. Measure 73 continues the right-hand melody with a triplet and a left-hand accompaniment with eighth-note patterns. Measure 74 shows a right-hand melody with a triplet and a left-hand accompaniment with eighth-note patterns. Fingering numbers are provided for many notes.

75

Measures 75-77 of a piano piece. Measure 75 features a right-hand melody with a triplet and a left-hand accompaniment with eighth-note patterns. Measure 76 continues the right-hand melody with a triplet and a left-hand accompaniment with eighth-note patterns. Measure 77 shows a right-hand melody with a triplet and a left-hand accompaniment with eighth-note patterns. Fingering numbers are provided for many notes.

78

Measures 78-80 of a piano piece. Measure 78 features a right-hand melody with a triplet and a left-hand accompaniment with eighth-note patterns. Measure 79 continues the right-hand melody with a triplet and a left-hand accompaniment with eighth-note patterns. Measure 80 shows a right-hand melody with a triplet and a left-hand accompaniment with eighth-note patterns. Fingering numbers are provided for many notes.

71

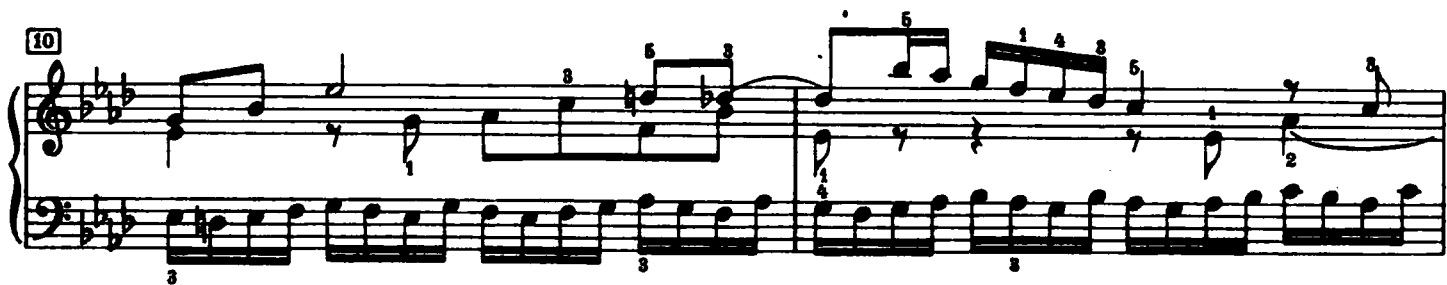
Measures 81-83 of a piano piece. Measure 81 features a right-hand melody with a triplet and a left-hand accompaniment with eighth-note patterns. Measure 82 continues the right-hand melody with a triplet and a left-hand accompaniment with eighth-note patterns. Measure 83 shows a right-hand melody with a triplet and a left-hand accompaniment with eighth-note patterns. Fingering numbers are provided for many notes.

74

Measures 84-86 of a piano piece. Measure 84 features a right-hand melody with a triplet and a left-hand accompaniment with eighth-note patterns. Measure 85 continues the right-hand melody with a triplet and a left-hand accompaniment with eighth-note patterns. Measure 86 shows a right-hand melody with a triplet and a left-hand accompaniment with eighth-note patterns. Fingering numbers are provided for many notes.

## Fuga XVII

a 4 Voci



15

Measures 15 and 16 of a piano piece. The key signature has three flats (B-flat, E-flat, A-flat). Measure 15 features a treble staff with a melodic line and a bass staff with a rhythmic accompaniment. Measure 16 continues the melody and accompaniment. Fingering numbers 1-5 are present above the treble staff notes.

17

Measures 17 and 18. Measure 17 shows a continuation of the melodic and rhythmic patterns. Measure 18 includes a fermata over the final note of the treble staff. Fingering numbers 1-5 are indicated.

19

Measures 19 and 20. Measure 19 features a melodic line with a fermata. Measure 20 continues the piece. Fingering numbers 1-5 are present.

21

Measures 21 and 22. Measure 21 shows a melodic line with a fermata. Measure 22 continues the piece. Fingering numbers 1-5 are indicated.

23

Measures 23 and 24. Measure 23 features a melodic line with a fermata. Measure 24 continues the piece. Fingering numbers 1-5 are present.

25

Measures 25 and 26. Measure 25 shows a melodic line with a fermata. Measure 26 continues the piece. Fingering numbers 1-5 are indicated.

27

29

31

33

35

37

The image shows a page of piano sheet music, numbered 98. It contains six systems of music, each consisting of a grand staff (treble and bass clefs). The systems are numbered 27, 29, 31, 33, 35, and 37. The music is in a key with three flats (B-flat, E-flat, A-flat) and a 2/4 time signature. The notation includes many slurs, ties, and dynamic markings like 'p' and 'f'. Fingerings are indicated by numbers 1-5 above or below notes. The page is a single system of music, likely a page from a larger score.

39

Measures 39-40 of a piano piece. The key signature has three flats (B-flat, E-flat, A-flat). Measure 39 features a treble staff with a melodic line and a bass staff with a supporting line. Measure 40 continues the melodic development with some chromaticism. Fingering numbers are present above and below notes.

41

Measures 41-42. Measure 41 shows a more active treble staff with sixteenth-note patterns. Measure 42 features a long, flowing melodic line in the treble and a more rhythmic bass line. Fingering is indicated throughout.

43

Measures 43-44. Measure 43 contains a complex melodic phrase in the treble with many accidentals. Measure 44 shows a continuation of the melodic line with some rests in the treble and active bass. Fingering is clearly marked.

45

Measures 45-46. Measure 45 has a treble staff with a sustained chord and a more active bass line. Measure 46 features a melodic line in the treble and a bass line with eighth-note patterns. Fingering is indicated.

47

Measures 47-48. Measure 47 shows a treble staff with a melodic line and a bass line with eighth-note patterns. Measure 48 features a treble staff with a melodic line and a bass line with eighth-note patterns. A trill (tr) is marked in the treble. Fingering is indicated.

49

Measures 49-50. Measure 49 shows a treble staff with a melodic line and a bass line with eighth-note patterns. Measure 50 features a treble staff with a melodic line and a bass line with eighth-note patterns. Fingering is indicated.