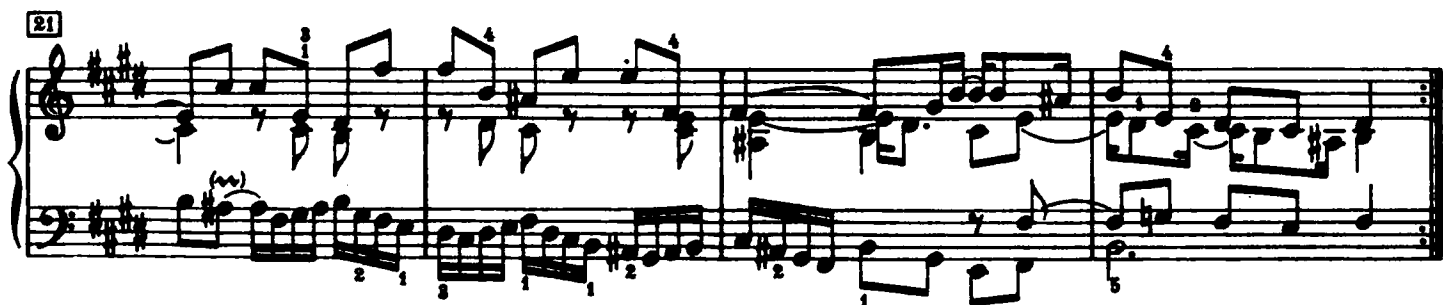
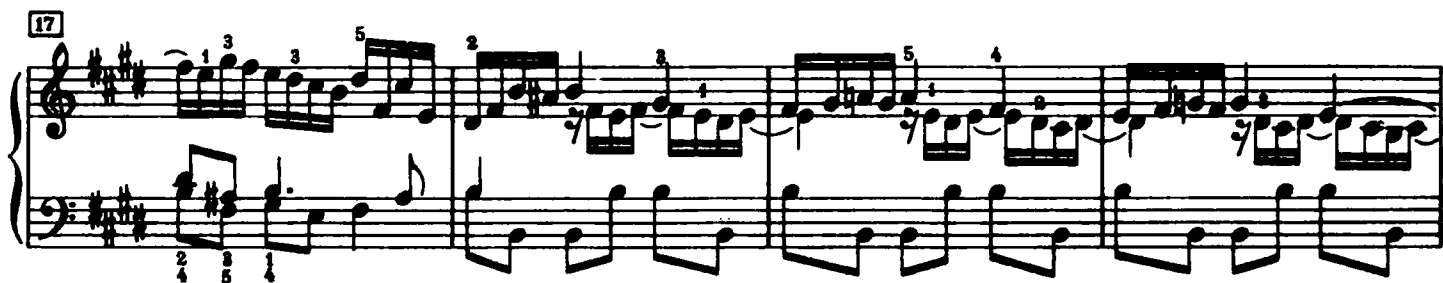
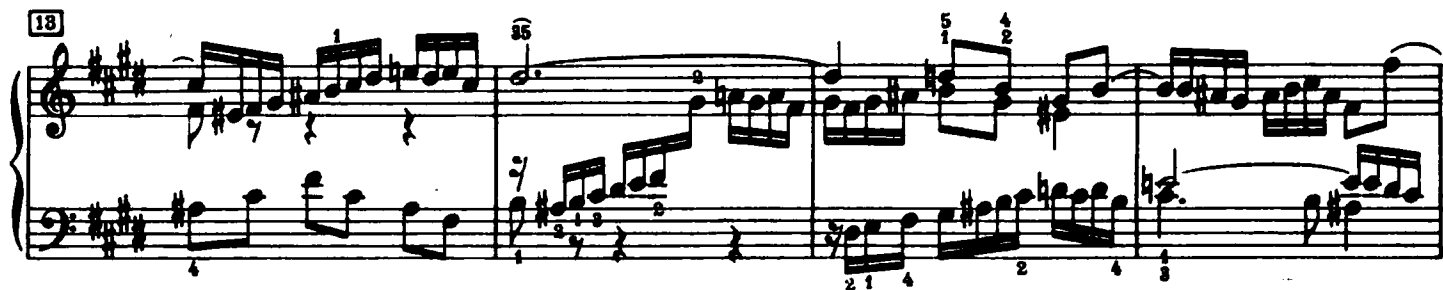
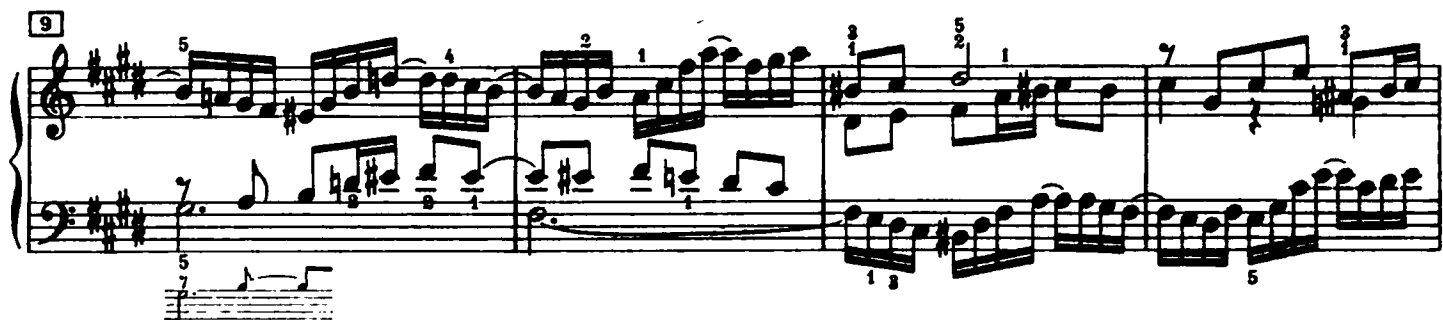
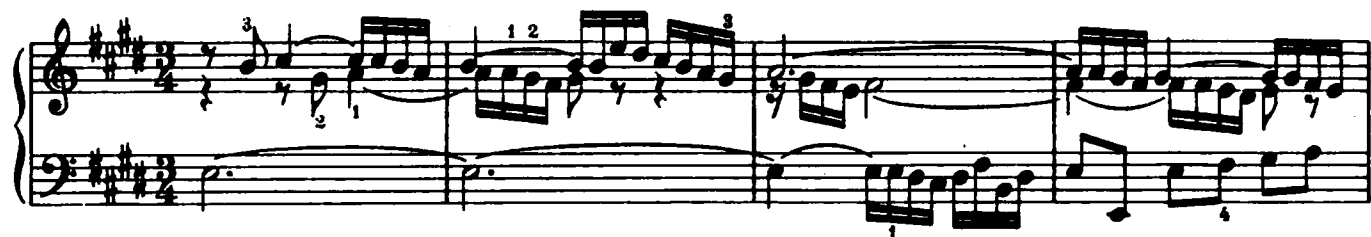
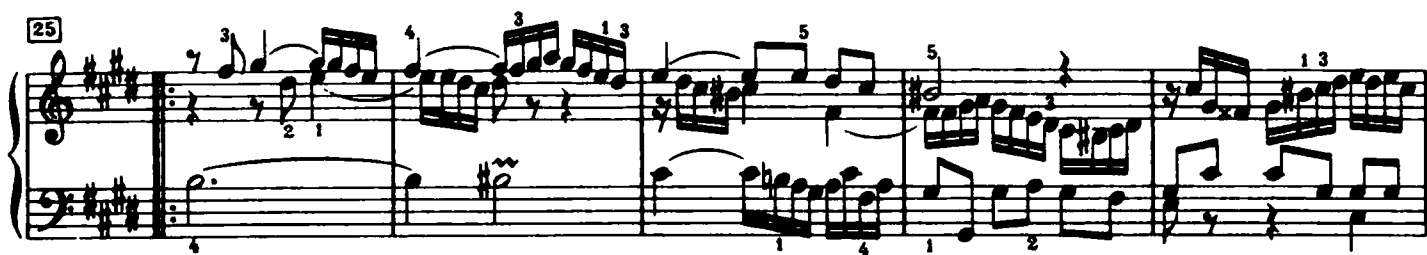


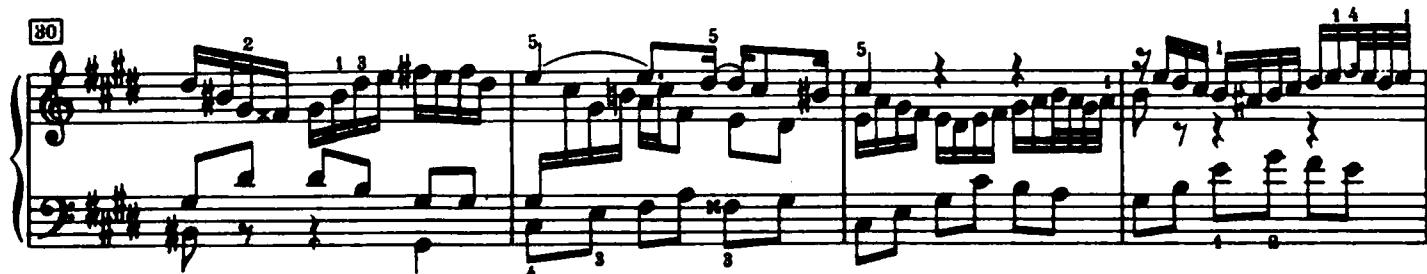
## Praeludium IX



25



30



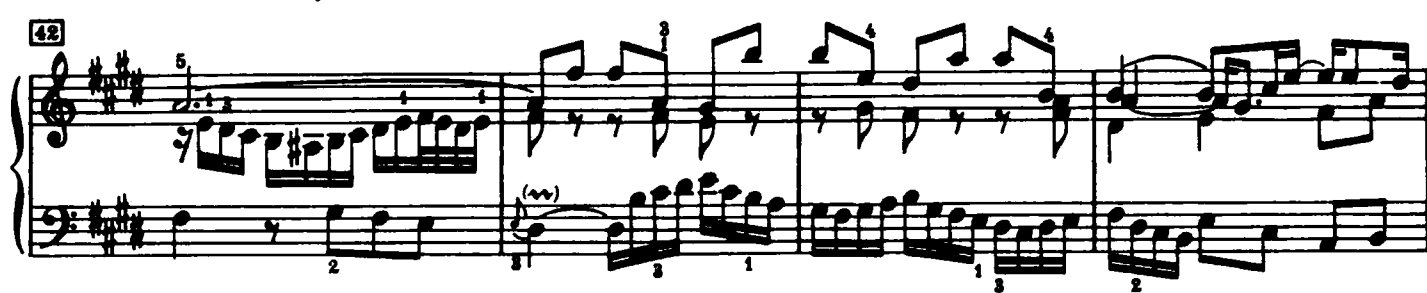
34



38



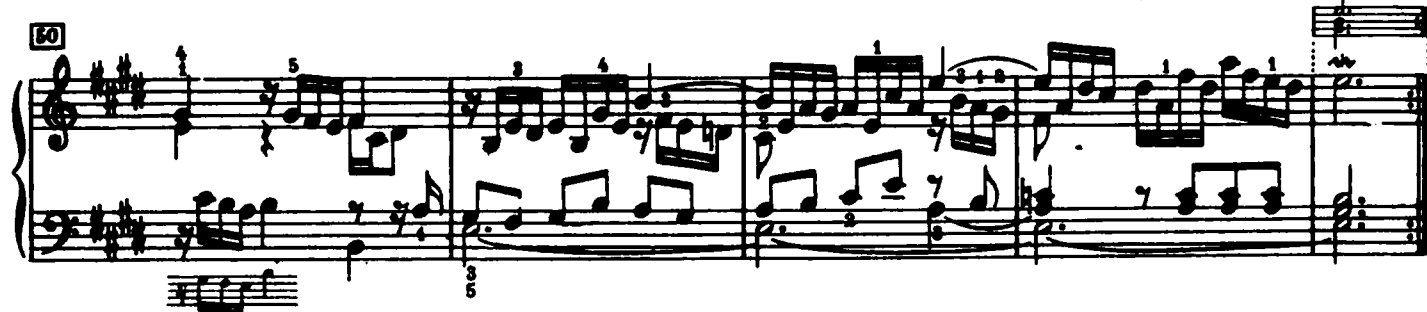
42



46

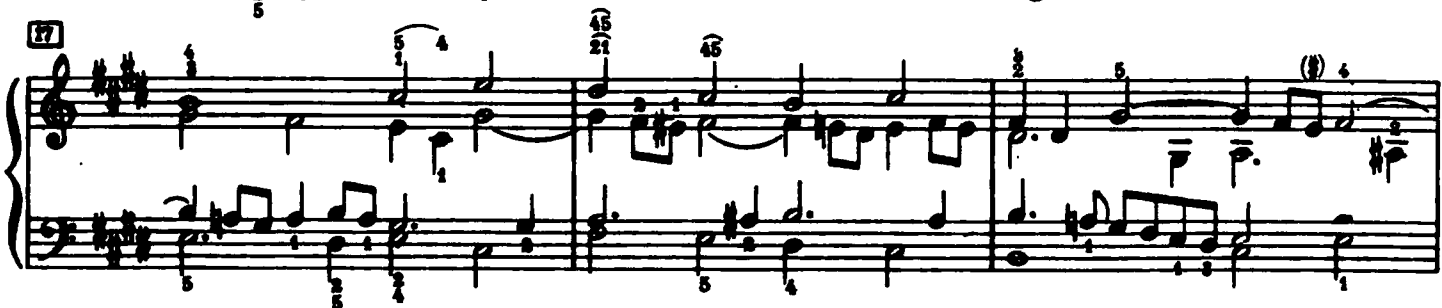
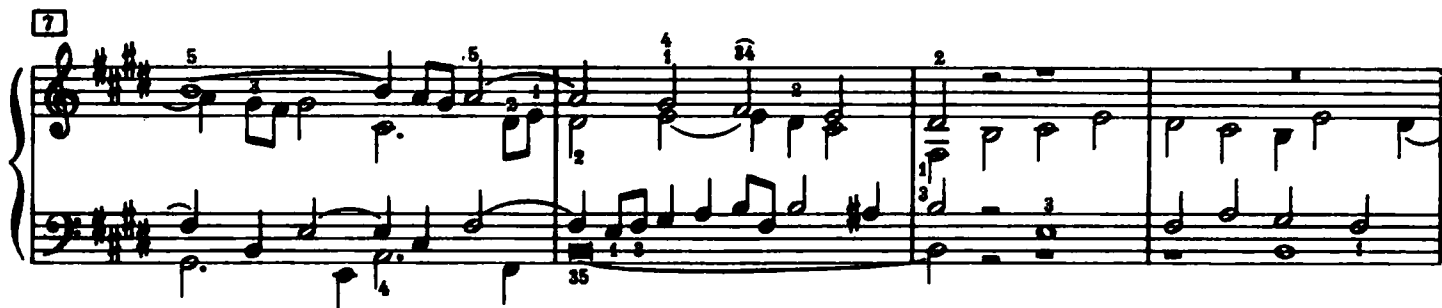
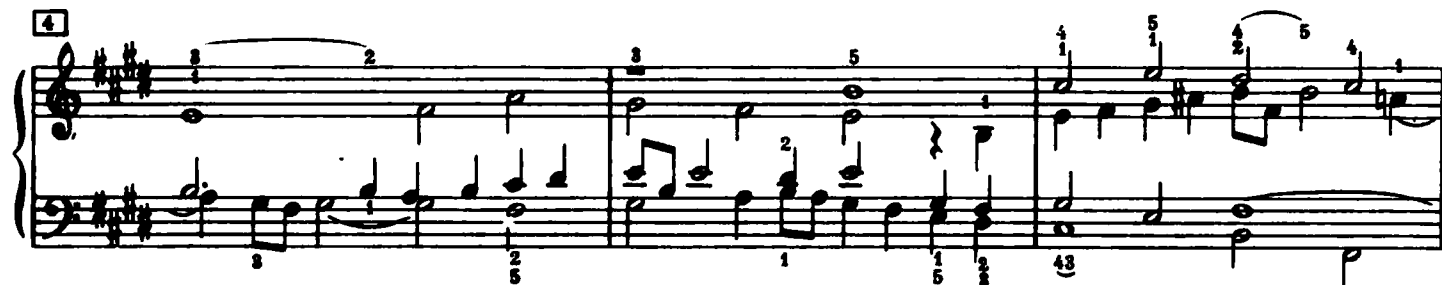


50



## Fuga IX

a 4 Voci



20

Measures 20-23 of a musical score in D major (two sharps). The piece is in 4/4 time. Measure 20 features a treble clef with a half note D4, a quarter note E4, and a quarter note F#4, with a finger number 1 below the first note. The bass clef has a half note D3, a quarter note E3, and a quarter note F#3, with a finger number 1 below the first note. Measure 21 continues with a half note G4, a quarter note A4, and a quarter note B4 in the treble, and a half note G3, a quarter note A3, and a quarter note B3 in the bass. Measure 22 has a half note C5, a quarter note B4, and a quarter note A4 in the treble, and a half note C4, a quarter note B3, and a quarter note A3 in the bass. Measure 23 concludes with a half note G4, a quarter note F#4, and a quarter note E4 in the treble, and a half note G3, a quarter note F#3, and a quarter note E3 in the bass. Fingerings are indicated by numbers 1-5 above or below notes.

24

Measures 24-27 of the musical score. Measure 24: Treble clef has a half note D4, a quarter note E4, and a quarter note F#4; bass clef has a half note D3, a quarter note E3, and a quarter note F#3. Measure 25: Treble clef has a half note G4, a quarter note A4, and a quarter note B4; bass clef has a half note G3, a quarter note A3, and a quarter note B3. Measure 26: Treble clef has a half note C5, a quarter note B4, and a quarter note A4; bass clef has a half note C4, a quarter note B3, and a quarter note A3. Measure 27: Treble clef has a half note G4, a quarter note F#4, and a quarter note E4; bass clef has a half note G3, a quarter note F#3, and a quarter note E3. Fingerings are indicated by numbers 1-5 above or below notes.

28

Measures 28-31 of the musical score. Measure 28: Treble clef has a half note D4, a quarter note E4, and a quarter note F#4; bass clef has a half note D3, a quarter note E3, and a quarter note F#3. Measure 29: Treble clef has a half note G4, a quarter note A4, and a quarter note B4; bass clef has a half note G3, a quarter note A3, and a quarter note B3. Measure 30: Treble clef has a half note C5, a quarter note B4, and a quarter note A4; bass clef has a half note C4, a quarter note B3, and a quarter note A3. Measure 31: Treble clef has a half note G4, a quarter note F#4, and a quarter note E4; bass clef has a half note G3, a quarter note F#3, and a quarter note E3. Fingerings are indicated by numbers 1-5 above or below notes.

32

Measures 32-35 of the musical score. Measure 32: Treble clef has a half note D4, a quarter note E4, and a quarter note F#4; bass clef has a half note D3, a quarter note E3, and a quarter note F#3. Measure 33: Treble clef has a half note G4, a quarter note A4, and a quarter note B4; bass clef has a half note G3, a quarter note A3, and a quarter note B3. Measure 34: Treble clef has a half note C5, a quarter note B4, and a quarter note A4; bass clef has a half note C4, a quarter note B3, and a quarter note A3. Measure 35: Treble clef has a half note G4, a quarter note F#4, and a quarter note E4; bass clef has a half note G3, a quarter note F#3, and a quarter note E3. Fingerings are indicated by numbers 1-5 above or below notes.

36

Measures 36-39 of the musical score. Measure 36: Treble clef has a half note D4, a quarter note E4, and a quarter note F#4; bass clef has a half note D3, a quarter note E3, and a quarter note F#3. Measure 37: Treble clef has a half note G4, a quarter note A4, and a quarter note B4; bass clef has a half note G3, a quarter note A3, and a quarter note B3. Measure 38: Treble clef has a half note C5, a quarter note B4, and a quarter note A4; bass clef has a half note C4, a quarter note B3, and a quarter note A3. Measure 39: Treble clef has a half note G4, a quarter note F#4, and a quarter note E4; bass clef has a half note G3, a quarter note F#3, and a quarter note E3. Fingerings are indicated by numbers 1-5 above or below notes.

40

Measures 40-43 of the musical score. Measure 40: Treble clef has a half note D4, a quarter note E4, and a quarter note F#4; bass clef has a half note D3, a quarter note E3, and a quarter note F#3. Measure 41: Treble clef has a half note G4, a quarter note A4, and a quarter note B4; bass clef has a half note G3, a quarter note A3, and a quarter note B3. Measure 42: Treble clef has a half note C5, a quarter note B4, and a quarter note A4; bass clef has a half note C4, a quarter note B3, and a quarter note A3. Measure 43: Treble clef has a half note G4, a quarter note F#4, and a quarter note E4; bass clef has a half note G3, a quarter note F#3, and a quarter note E3. Fingerings are indicated by numbers 1-5 above or below notes.