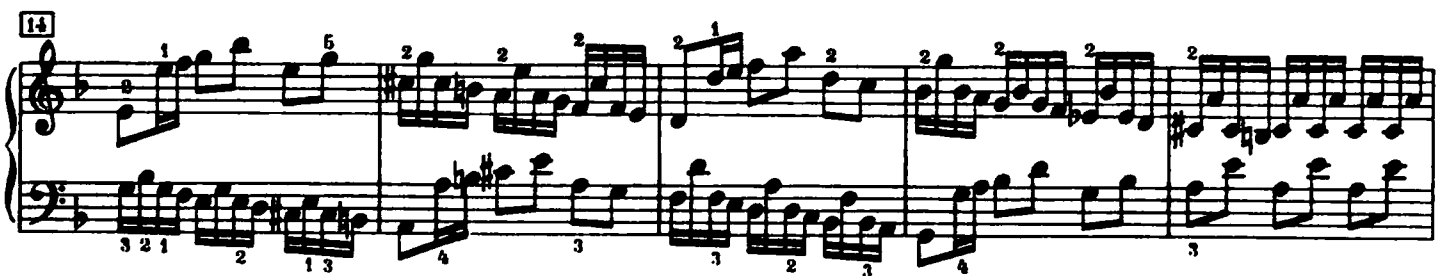


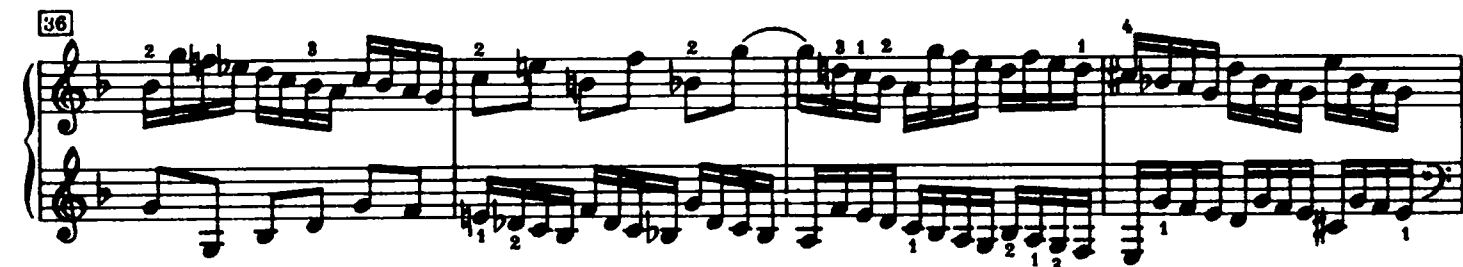
Praeludium VI



32



36



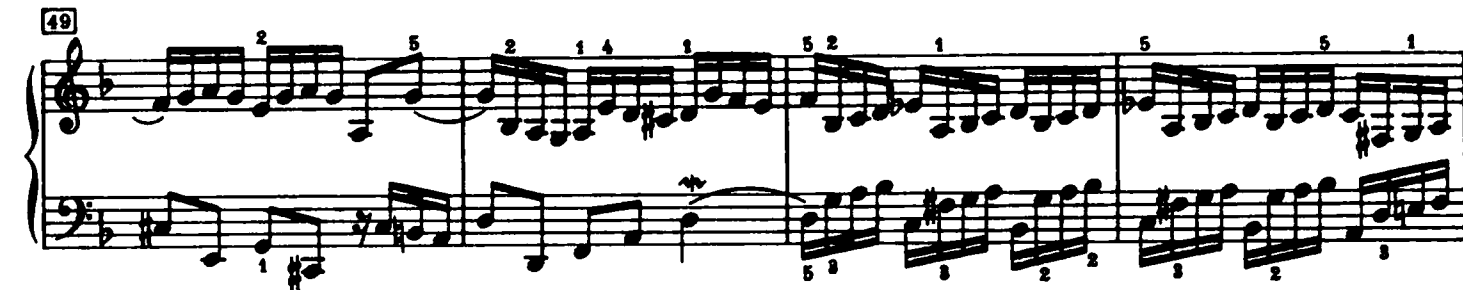
40



45



49



53

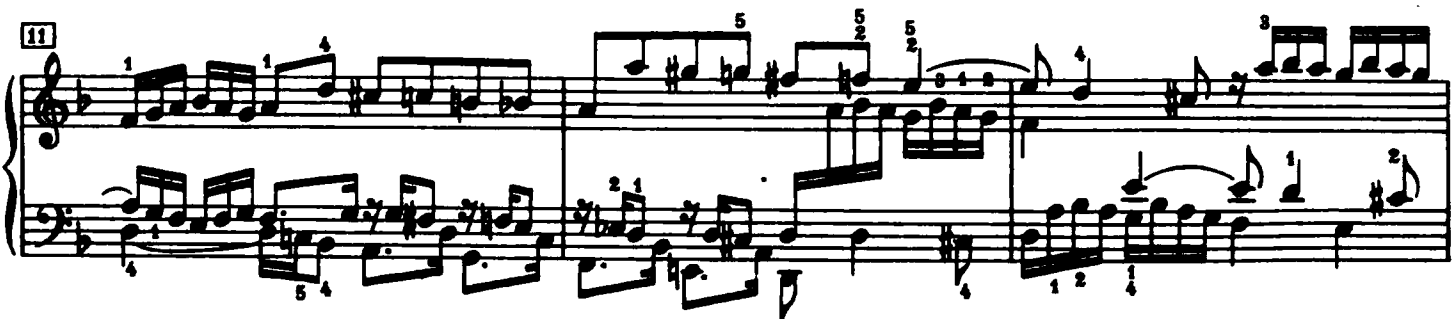
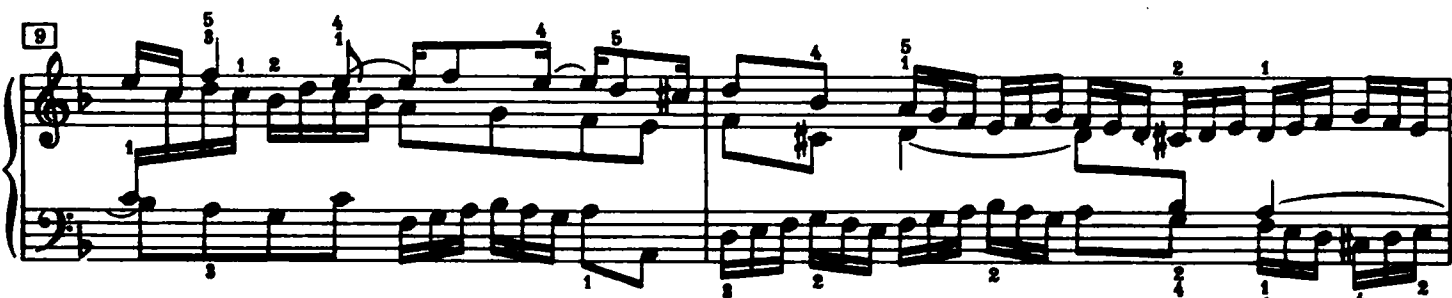
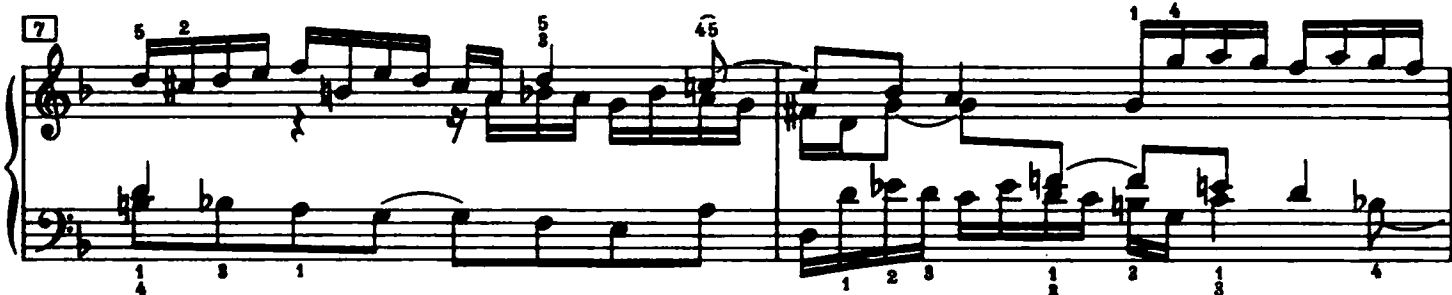
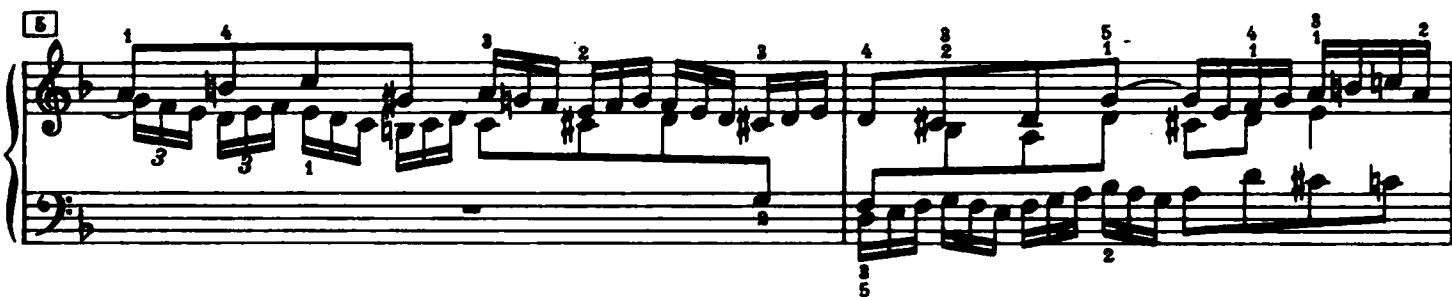


57



Fuga VI

a 3 Voci



14

Measures 14 and 15 of a piano piece. Measure 14 features a complex right-hand melody with sixteenth-note runs and triplets, while the left hand provides a steady eighth-note accompaniment. Measure 15 continues the right-hand melody with more sixteenth-note patterns and a triplet, with the left hand playing a descending eighth-note line.

16

Measures 16 and 17. Measure 16 shows a right-hand melody with a triplet and a grace note, accompanied by a left-hand eighth-note pattern. Measure 17 features a more active right-hand melody with sixteenth-note runs and a triplet, with the left hand playing a descending eighth-note line.

18

Measures 18 and 19. Measure 18 contains a right-hand melody with a triplet and a grace note, with the left hand playing a descending eighth-note line. Measure 19 features a right-hand melody with a triplet and a grace note, with the left hand playing a descending eighth-note line.

20

Measures 20 and 21. Measure 20 shows a right-hand melody with a triplet and a grace note, with the left hand playing a descending eighth-note line. Measure 21 features a right-hand melody with a triplet and a grace note, with the left hand playing a descending eighth-note line.

22

Measures 22 and 23. Measure 22 contains a right-hand melody with a triplet and a grace note, with the left hand playing a descending eighth-note line. Measure 23 features a right-hand melody with a triplet and a grace note, with the left hand playing a descending eighth-note line.

24

Measures 24 and 25. Measure 24 shows a right-hand melody with a triplet and a grace note, with the left hand playing a descending eighth-note line. Measure 25 features a right-hand melody with a triplet and a grace note, with the left hand playing a descending eighth-note line.