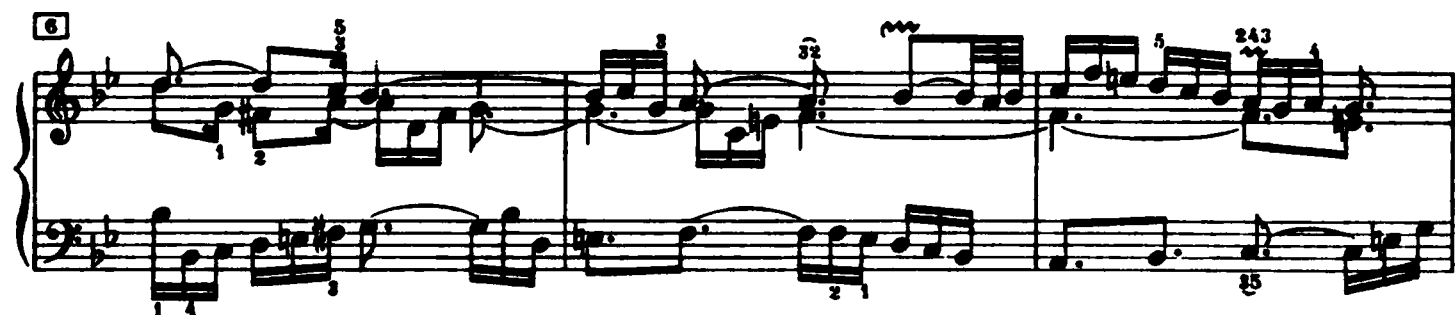
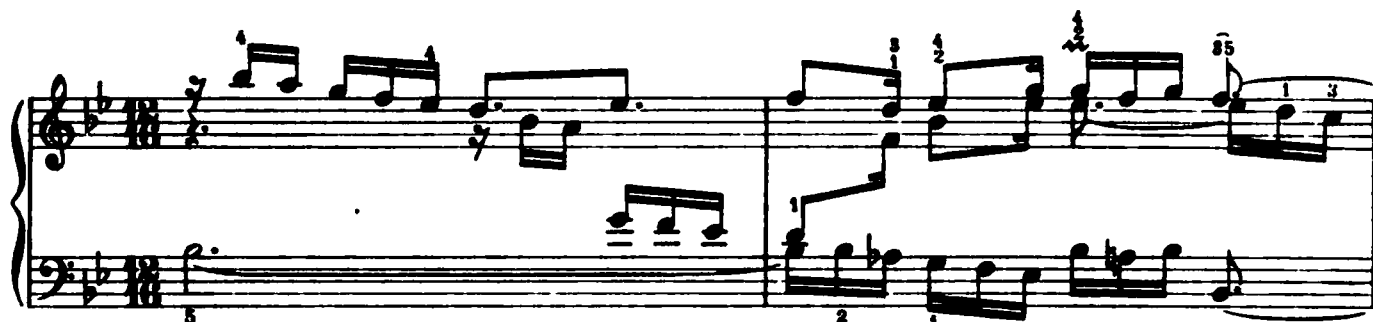


## Praeludium XXI



15



18



21



24



27



30



33

Measures 33-36 of a musical score. The key signature has two flats (B-flat and E-flat). The music is written for piano with treble and bass staves. Measure 33 starts with a treble staff containing a triplet of eighth notes (F4, G4, A4) and a bass staff with a triplet of eighth notes (F3, G3, A3). Fingerings are indicated by numbers 1-5. The piece concludes with a double bar line at the end of measure 36.

37

Measures 37-40 of a musical score. The key signature has two flats. Measure 37 features a treble staff with a triplet of eighth notes (F4, G4, A4) and a bass staff with a triplet of eighth notes (F3, G3, A3). Fingerings are indicated by numbers 1-5. The piece concludes with a double bar line at the end of measure 40.

41

Measures 41-44 of a musical score. The key signature has two flats. Measure 41 features a treble staff with a triplet of eighth notes (F4, G4, A4) and a bass staff with a triplet of eighth notes (F3, G3, A3). Fingerings are indicated by numbers 1-5. The piece concludes with a double bar line at the end of measure 44.

45

Measures 45-48 of a musical score. The key signature has two flats. Measure 45 features a treble staff with a triplet of eighth notes (F4, G4, A4) and a bass staff with a triplet of eighth notes (F3, G3, A3). Fingerings are indicated by numbers 1-5. The piece concludes with a double bar line at the end of measure 48.

49

Measures 49-52 of a musical score. The key signature has two flats. Measure 49 features a treble staff with a triplet of eighth notes (F4, G4, A4) and a bass staff with a triplet of eighth notes (F3, G3, A3). Fingerings are indicated by numbers 1-5. The piece concludes with a double bar line at the end of measure 52.

53

Measures 53-56 of a musical score. The key signature has two flats. Measure 53 features a treble staff with a triplet of eighth notes (F4, G4, A4) and a bass staff with a triplet of eighth notes (F3, G3, A3). Fingerings are indicated by numbers 1-5. The piece concludes with a double bar line at the end of measure 56.

57

Measures 57-60 of a musical score. The key signature has two flats. Measure 57 features a treble staff with a triplet of eighth notes (F4, G4, A4) and a bass staff with a triplet of eighth notes (F3, G3, A3). Fingerings are indicated by numbers 1-5. The piece concludes with a double bar line at the end of measure 60.

61

Measures 61-64. Treble staff: Measure 61 has fingerings 2, 1 and a slur over measures 62-64. Bass staff: Measure 61 has a slur over measures 62-64. Measure 62 has fingerings 3, 3, 2. Measure 63 has fingerings 3, 3, 2. Measure 64 has fingerings 3, 3, 2.

65

Measures 65-68. Treble staff: Measure 65 has fingerings 1, 5, 4 and a slur over measures 66-68. Bass staff: Measure 65 has a slur over measures 66-68. Measure 66 has fingerings 1, 3. Measure 67 has fingerings 1, 3. Measure 68 has fingerings 2, 1, 1.

69

Measures 69-72. Treble staff: Measure 69 has fingerings 2, 1, 3 and a slur over measures 70-72. Bass staff: Measure 69 has a slur over measures 70-72. Measure 70 has fingerings 2, 1. Measure 71 has fingerings 1, 3, 1. Measure 72 has fingerings 1, 3, 1.

73

Measures 73-76. Treble staff: Measure 73 has fingerings 5, 3, 4 and a slur over measures 74-76. Bass staff: Measure 73 has a slur over measures 74-76. Measure 74 has fingerings 1, 2, 1. Measure 75 has fingerings 1, 2, 1. Measure 76 has fingerings 1, 2, 1.

76

Measures 77-80. Treble staff: Measure 77 has fingerings 2, 1 and a slur over measures 78-80. Bass staff: Measure 77 has a slur over measures 78-80. Measure 78 has fingerings 2, 1, 3. Measure 79 has fingerings 2, 1, 3. Measure 80 has fingerings 2, 1, 3.

80

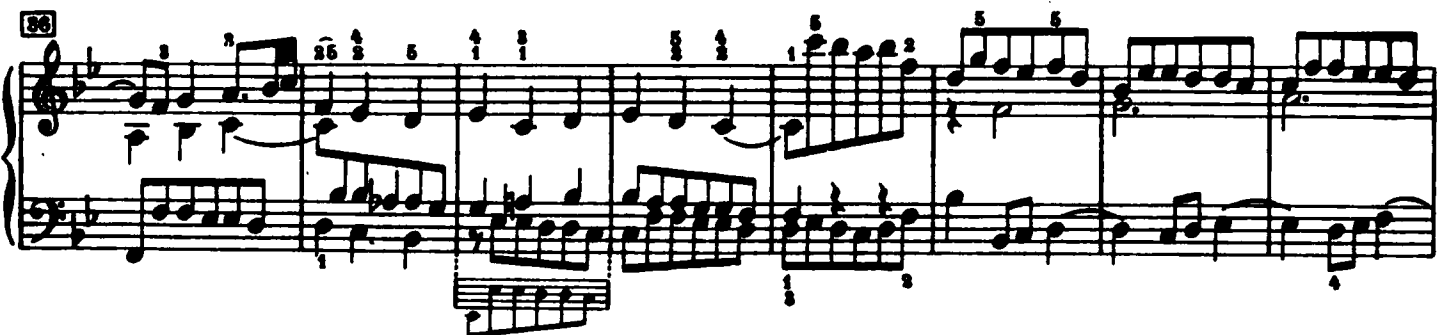
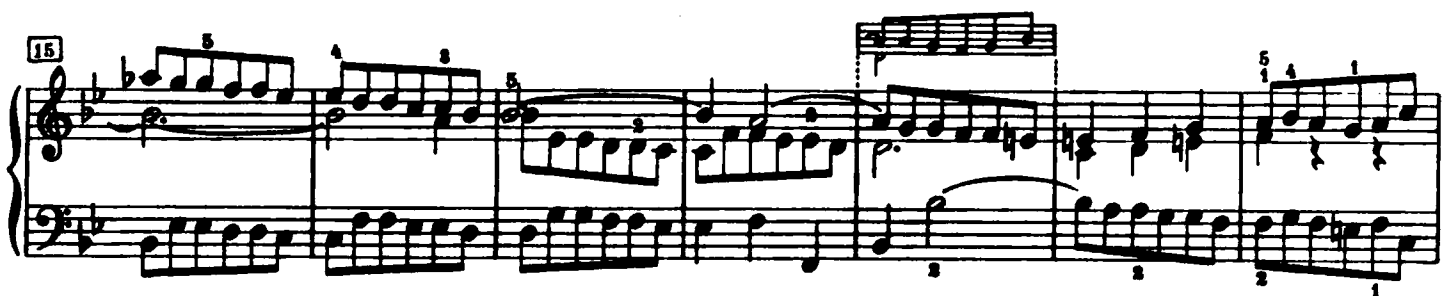
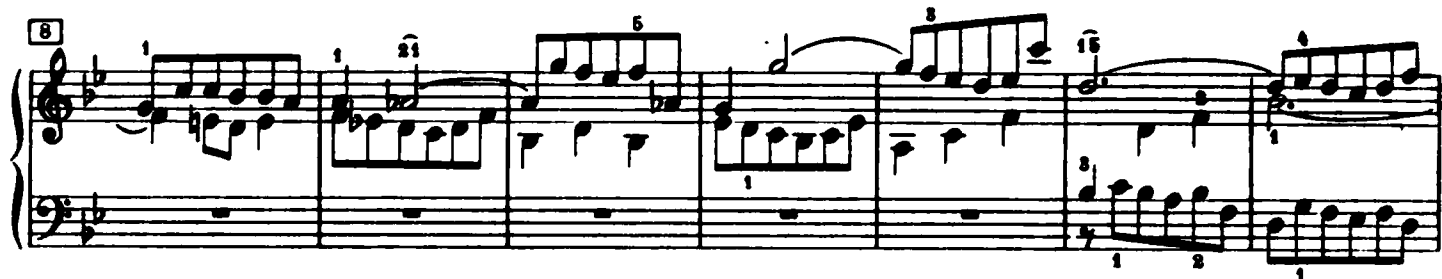
Measures 81-84. Treble staff: Measure 81 has fingerings 5, 2, 1 and a slur over measures 82-84. Bass staff: Measure 81 has a slur over measures 82-84. Measure 82 has fingerings 1, 3. Measure 83 has fingerings 1, 3. Measure 84 has fingerings 1, 3.

84

Measures 85-88. Treble staff: Measure 85 has fingerings 1, 2, 1 and a slur over measures 86-88. Bass staff: Measure 85 has a slur over measures 86-88. Measure 86 has fingerings 1, 3. Measure 87 has fingerings 1, 3. Measure 88 has fingerings 1, 3.

## Fuga XXI

a 3 Voci



44



53

Handwritten musical score system 44, measures 44-53. The system is in G major (one sharp) and 4/4 time. It features a piano accompaniment with a steady eighth-note bass line and a treble line with various melodic patterns, including triplets and sixteenth-note runs. Fingering numbers (1-5) are indicated throughout.

51



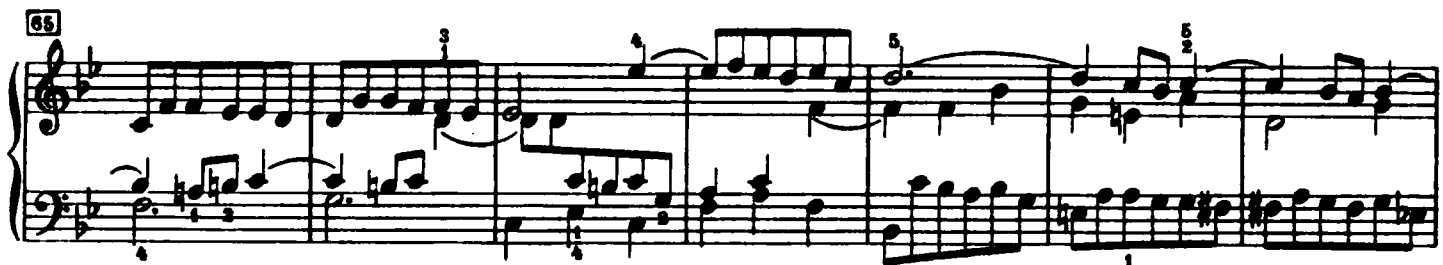
Handwritten musical score system 51, measures 51-59. The system continues the piece with similar melodic and harmonic textures. It includes a variety of note values and rests, with fingering numbers clearly marked for the right hand.

58



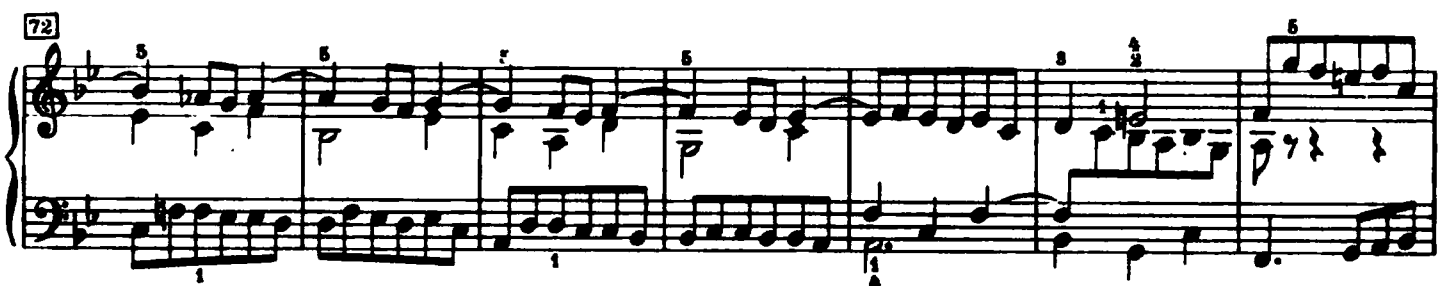
Handwritten musical score system 58, measures 58-65. This system introduces some longer note values and more complex melodic phrasing in the treble, while the bass line remains active. Fingering is indicated for both hands.

65



Handwritten musical score system 65, measures 65-71. The system shows a continuation of the melodic development with some syncopation and varied rhythmic patterns. Fingering numbers are present.

72



Handwritten musical score system 72, measures 72-78. This system features more complex melodic lines with many beamed sixteenth and thirty-second notes. Fingering is indicated.

79



Handwritten musical score system 79, measures 79-85. The system continues with intricate melodic patterns and a consistent bass line. Fingering numbers are provided.

86



Handwritten musical score system 86, measures 86-92. This is the final system on the page, concluding with a final cadence. It includes various melodic and harmonic elements, with fingering numbers indicated.