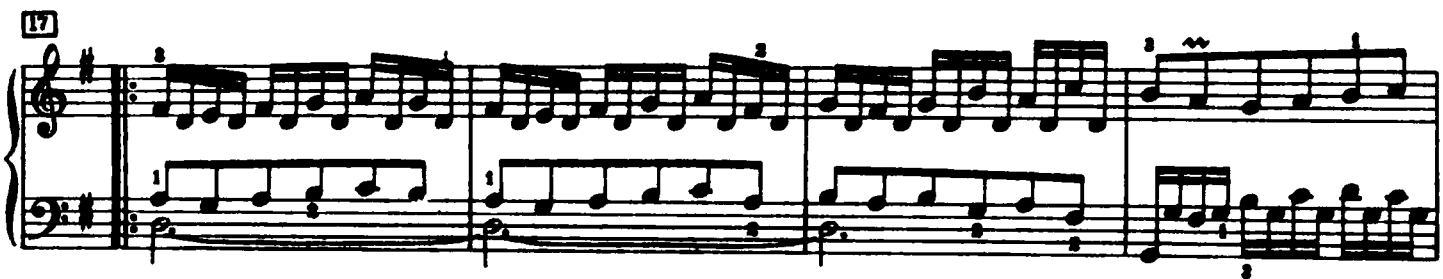


## Praeludium XV



25

Measures 25-28 of a piano piece in G major. The right hand features a melodic line with eighth and sixteenth notes, including triplets and slurs. The left hand provides a steady accompaniment with eighth-note patterns. Fingering numbers (1-5) are indicated throughout.

29

Measures 29-32. The right hand continues the melodic development with slurs and ties. The left hand maintains the eighth-note accompaniment. Measure 32 ends with a fermata on the right hand.

33

Measures 33-36. The right hand has a more active melodic line with slurs and ties. The left hand continues the eighth-note accompaniment. Measure 36 ends with a fermata on the right hand.

37

Measures 37-40. The right hand features a melodic line with slurs and ties. The left hand continues the eighth-note accompaniment. Measure 40 ends with a fermata on the right hand.

41

Measures 41-44. The right hand has a melodic line with slurs and ties. The left hand continues the eighth-note accompaniment. Measure 44 ends with a fermata on the right hand.

45

Measures 45-48. The right hand features a melodic line with slurs and ties. The left hand continues the eighth-note accompaniment. Measure 48 ends with a fermata on the right hand.

## Fuga XV

a 3 Voci

Sheet music for Fuga XV, a 3-part vocal fugue. The score is written for three voices (Soprano, Alto, and Tenor) and piano accompaniment. The key signature is one sharp (F#), and the time signature is 3/4. The score is divided into five systems, each containing two staves (treble and bass clef). The first system shows the initial entry of the fugue theme in the Soprano voice, followed by the Alto and Tenor voices. The second system continues the development of the theme, with the piano accompaniment providing harmonic support. The third system features a more complex texture with multiple voices and piano accompaniment. The fourth system shows the fugue theme re-entering in a different voice, creating a sense of continuity. The fifth system concludes the fugue with a final cadence. The score includes various musical notations such as notes, rests, accidentals, and dynamic markings. The first system is marked with a '3' above the Soprano staff, indicating a triplet. The second system is marked with a '7' above the Soprano staff, indicating a seventh note. The third system is marked with a '13' above the Soprano staff, indicating a thirteenth note. The fourth system is marked with a '19' above the Soprano staff, indicating a nineteenth note. The fifth system is marked with a '25' above the Soprano staff, indicating a twenty-fifth note. The score is written in a clear, legible style, suitable for a printed edition.

37

4

1

3

2

4

1 4 5 2

3

2 1 3

43

Musical score for 'The Rose Tree'. The score is written for piano (p) and features a treble and bass clef. The key signature is one sharp (F#). The melody is in the treble clef, and the accompaniment is in the bass clef. The score includes fingerings (1, 2, 4, 5) and a repeat sign. The tempo is marked 'Allegretto'.

49

Handwritten musical score for 'The Rose Tree'. The score is written on two staves, Treble and Bass. The key signature is one sharp (F#). The melody is in the Treble staff, and the accompaniment is in the Bass staff. The score consists of six measures. The first measure has a 4-measure rest in the Treble staff and a 4-measure rest in the Bass staff. The second measure has a 3-measure rest in the Treble staff and a 3-measure rest in the Bass staff. The third measure has a 5-measure rest in the Treble staff and a 5-measure rest in the Bass staff. The fourth measure has a 4-measure rest in the Treble staff and a 4-measure rest in the Bass staff. The fifth measure has a 4-measure rest in the Treble staff and a 4-measure rest in the Bass staff. The sixth measure has a 5-measure rest in the Treble staff and a 5-measure rest in the Bass staff. The score is written in a simple, handwritten style.

55

Handwritten musical score for 'The Rose Tree'. The score is written on two staves, Treble and Bass clef, with a key signature of one sharp (F#). The melody is in the Treble clef, and the accompaniment is in the Bass clef. The piece is in 4/4 time. The score includes various musical notations such as eighth notes, quarter notes, and rests. There are also some handwritten annotations, including a '4' above the first measure of the melody and a '2' above the second measure of the melody. The score ends with a double bar line.

[illegible]

A musical score for the song "The Rose Tree". The score is written for a single melodic line on a five-line staff. The key signature is one sharp (F#), and the time signature is 2/4. The melody begins with a treble clef and a key signature of one sharp. The first measure contains a quarter note G4, a quarter note A4, and a quarter note B4. The second measure contains a quarter note C5, a quarter note D5, and a quarter note E5. The third measure contains a quarter note F#5, a quarter note G5, and a quarter note A5. The fourth measure contains a quarter note B5, a quarter note C6, and a quarter note D6. The fifth measure contains a quarter note E6, a quarter note F#6, and a quarter note G6. The sixth measure contains a quarter note A6, a quarter note B6, and a quarter note C7. The seventh measure contains a quarter note D7, a quarter note E7, and a quarter note F#7. The eighth measure contains a quarter note G7, a quarter note A7, and a quarter note B7. The ninth measure contains a quarter note C8, a quarter note D8, and a quarter note E8. The tenth measure contains a quarter note F#8, a quarter note G8, and a quarter note A8. The eleventh measure contains a quarter note B8, a quarter note C9, and a quarter note D9. The twelfth measure contains a quarter note E9, a quarter note F#9, and a quarter note G9. The thirteenth measure contains a quarter note A9, a quarter note B9, and a quarter note C10. The fourteenth measure contains a quarter note D10, a quarter note E10, and a quarter note F#10. The fifteenth measure contains a quarter note G10, a quarter note A10, and a quarter note B10. The sixteenth measure contains a quarter note C11, a quarter note D11, and a quarter note E11. The seventeenth measure contains a quarter note F#11, a quarter note G11, and a quarter note A11. The eighteenth measure contains a quarter note B11, a quarter note C12, and a quarter note D12. The nineteenth measure contains a quarter note E12, a quarter note F#12, and a quarter note G12. The twentieth measure contains a quarter note A12, a quarter note B12, and a quarter note C13. The twenty-first measure contains a quarter note D13, a quarter note E13, and a quarter note F#13. The twenty-second measure contains a quarter note G13, a quarter note A13, and a quarter note B13. The twenty-third measure contains a quarter note C14, a quarter note D14, and a quarter note E14. The twenty-fourth measure contains a quarter note F#14, a quarter note G14, and a quarter note A14. The twenty-fifth measure contains a quarter note B14, a quarter note C15, and a quarter note D15. The twenty-sixth measure contains a quarter note E15, a quarter note F#15, and a quarter note G15. The twenty-seventh measure contains a quarter note A15, a quarter note B15, and a quarter note C16. The twenty-eighth measure contains a quarter note D16, a quarter note E16, and a quarter note F#16. The twenty-ninth measure contains a quarter note G16, a quarter note A16, and a quarter note B16. The thirtieth measure contains a quarter note C17, a quarter note D17, and a quarter note E17. The thirty-first measure contains a quarter note F#17, a quarter note G17, and a quarter note A17. The thirty-second measure contains a quarter note B17, a quarter note C18, and a quarter note D18. The thirty-third measure contains a quarter note E18, a quarter note F#18, and a quarter note G18. The thirty-fourth measure contains a quarter note A18, a quarter note B18, and a quarter note C19. The thirty-fifth measure contains a quarter note D19, a quarter note E19, and a quarter note F#19. The thirty-sixth measure contains a quarter note G19, a quarter note A19, and a quarter note B19. The thirty-seventh measure contains a quarter note C20, a quarter note D20, and a quarter note E20. The thirty-eighth measure contains a quarter note F#20, a quarter note G20, and a quarter note A20. The thirty-ninth measure contains a quarter note B20, a quarter note C21, and a quarter note D21. The fortieth measure contains a quarter note E21, a quarter note F#21, and a quarter note G21. The forty-first measure contains a quarter note A21, a quarter note B21, and a quarter note C22. The forty-second measure contains a quarter note D22, a quarter note E22, and a quarter note F#22. The forty-third measure contains a quarter note G22, a quarter note A22, and a quarter note B22. The forty-fourth measure contains a quarter note C23, a quarter note D23, and a quarter note E23. The forty-fifth measure contains a quarter note F#23, a quarter note G23, and a quarter note A23. The forty-sixth measure contains a quarter note B23, a quarter note C24, and a quarter note D24. The forty-seventh measure contains a quarter note E24, a quarter note F#24, and a quarter note G24. The forty-eighth measure contains a quarter note A24, a quarter note B24, and a quarter note C25. The forty-ninth measure contains a quarter note D25, a quarter note E25, and a quarter note F#25. The fiftieth measure contains a quarter note G25, a quarter note A25, and a quarter note B25. The fifty-first measure contains a quarter note C26, a quarter note D26, and a quarter note E26. The fifty-second measure contains a quarter note F#26, a quarter note G26, and a quarter note A26. The fifty-third measure contains a quarter note B26, a quarter note C27, and a quarter note D27. The fifty-fourth measure contains a quarter note E27, a quarter note F#27, and a quarter note G27. The fifty-fifth measure contains a quarter note A27, a quarter note B27, and a quarter note C28. The fifty-sixth measure contains a quarter note D28, a quarter note E28, and a quarter note F#28. The fifty-seventh measure contains a quarter note G28, a quarter note A28, and a quarter note B28. The fifty-eighth measure contains a quarter note C29, a quarter note D29, and a quarter note E29. The fifty-ninth measure contains a quarter note F#29, a quarter note G29, and a quarter note A29. The sixtieth measure contains a quarter note B29, a quarter note C30, and a quarter note D30. The sixty-first measure contains a quarter note E30, a quarter note F#30, and a quarter note G30. The sixty-second measure contains a quarter note A30, a quarter note B30, and a quarter note C31. The sixty-third measure contains a quarter note D31, a quarter note E31, and a quarter note F#31. The sixty-fourth measure contains a quarter note G31, a quarter note A31, and a quarter note B31. The sixty-fifth measure contains a quarter note C32, a quarter note D32, and a quarter note E32. The sixty-sixth measure contains a quarter note F#32, a quarter note G32, and a quarter note A32. The sixty-seventh measure contains a quarter note B32, a quarter note C33, and a quarter note D33. The sixty-eighth measure contains a quarter note E33, a quarter note F#33, and a quarter note G33. The sixty-ninth measure contains a quarter note A33, a quarter note B33, and a quarter note C34. The seventieth measure contains a quarter note D34, a quarter note E34, and a quarter note F#34. The seventy-first measure contains a quarter note G34, a quarter note A34, and a quarter note B34. The seventy-second measure contains a quarter note C35, a quarter note D35, and a quarter note E35. The seventy-third measure contains a quarter note F#35, a quarter note G35, and a quarter note A35. The seventy-fourth measure contains a quarter note B35, a quarter note C36, and a quarter note D36. The seventy-fifth measure contains a quarter note E36, a quarter note F#36, and a quarter note G36. The seventy-sixth measure contains a quarter note A36, a quarter note B36, and a quarter note C37. The seventy-seventh measure contains a quarter note D37, a quarter note E37, and a quarter note F#37. The seventy-eighth measure contains a quarter note G37, a quarter note A37, and a quarter note B37. The seventy-ninth measure contains a quarter note C38, a quarter note D38, and a quarter note E38. The eightieth measure contains a quarter note F#38, a quarter note G38, and a quarter note A38. The eighty-first measure contains a quarter note B38, a quarter note C39, and a quarter note D39. The eighty-second measure contains a quarter note E39, a quarter note F#39, and a quarter note G39. The eighty-third measure contains a quarter note A39, a quarter note B39, and a quarter note C40. The eighty-fourth measure contains a quarter note D40, a quarter note E40, and a quarter note F#40. The eighty-fifth measure contains a quarter note G40, a quarter note A40, and a quarter note B40. The eighty-sixth measure contains a quarter note C41, a quarter note D41, and a quarter note E41. The eighty-seventh measure contains a quarter note F#41, a quarter note G41, and a quarter note A41. The eighty-eighth measure contains a quarter note B41, a quarter note C42, and a quarter note D42. The eighty-ninth measure contains a quarter note E42, a quarter note F#42, and a quarter note G42. The ninetieth measure contains a quarter note A42, a quarter note B42, and a quarter note C43. The hundredth measure contains a quarter note D43, a quarter note E43, and a quarter note F#43. The hundred and first measure contains a quarter note G43, a quarter note A43, and a quarter note B43. The hundred and second measure contains a quarter note C44, a quarter note D44, and a quarter note E44. The hundred and third measure contains a quarter note F#44, a quarter note G44, and a quarter note A44. The hundred and fourth measure contains a quarter note B44, a quarter note C45, and a quarter note D45. The hundred and fifth measure contains a quarter note E45, a quarter note F#45, and a quarter note G45. The hundred and sixth measure contains a quarter note A45, a quarter note B45, and a quarter note C46. The hundred and seventh measure contains a quarter note D46, a quarter note E46, and a quarter note F#46. The hundred and eighth measure contains a quarter note G46, a quarter note A46, and a quarter note B46. The hundred and ninth measure contains a quarter note C47, a quarter note D47, and a quarter note E47. The hundred and tenth measure contains a quarter note F#47, a quarter note G47, and a quarter note A47. The hundred and eleventh measure contains a quarter note B47, a quarter note C48, and a quarter note D48. The hundred and twelfth measure contains a quarter note E48, a quarter note F#48, and a quarter note G48. The hundred and thirteenth measure contains a quarter note A48, a quarter note B48, and a quarter note C49. The hundred and fourteenth measure contains a quarter note D49, a quarter note E49, and a quarter note F#49. The hundred and fifteenth measure contains a quarter note G49, a quarter note A49, and a quarter note B49. The hundred and sixteenth measure contains a quarter note C50, a quarter note D50, and a quarter note E50. The hundred and seventeenth measure contains a quarter note F#50, a quarter note G50, and a quarter note A50. The hundred and eighteenth measure contains a quarter note B50, a quarter note C51, and a quarter note D51. The hundred and nineteenth measure contains a quarter note E51, a quarter note F#51, and a quarter note G51. The hundred and twentieth measure contains a quarter note A51, a quarter note B51, and a quarter note C52. The hundred and twenty-first measure contains a quarter note D52, a quarter note E52, and a quarter note F#52. The hundred and twenty-second measure contains a quarter note G52, a quarter note A52, and a quarter note B52. The hundred and twenty-third measure contains a quarter note C53, a quarter note D53, and a quarter note E53. The hundred and twenty-fourth measure contains a quarter note F#53, a quarter note G53, and a quarter note A53. The hundred and twenty-fifth measure contains a quarter note B53, a quarter note C54, and a quarter note D54. The hundred and twenty-sixth measure contains a quarter note E54, a quarter note F#54, and a quarter note G54. The hundred and twenty-seventh measure contains a quarter note A54, a quarter note B54, and a quarter note C55. The hundred and twenty-eighth measure contains a quarter note D55, a quarter note E55, and a quarter note F#55. The hundred and twenty-ninth measure contains a quarter note G55, a quarter note A55, and a quarter note B55. The hundred and thirtieth measure contains a quarter note C56, a quarter note D56, and a quarter note E56. The hundred and thirty-first measure contains a quarter note F#56, a quarter note G56, and a quarter note A56. The hundred and thirty-second measure contains a quarter note B56, a quarter note C57, and a quarter note D57. The hundred and thirty-third measure contains a quarter note E57, a quarter note F#57, and a quarter note G57. The hundred and thirty-fourth measure contains a quarter note A57, a quarter note B57, and a quarter note C58. The hundred and thirty-fifth measure contains a quarter note D58, a quarter note E58, and a quarter note F#58. The hundred and thirty-sixth measure contains a quarter note G58, a quarter note A58, and a quarter note B58. The hundred and thirty-seventh measure contains a quarter note C59, a quarter note D59, and a quarter note E59. The hundred and thirty-eighth measure contains a quarter note F#59, a quarter note G59, and a quarter note A59. The hundred and thirty-ninth measure contains a quarter note B59, a quarter note C60, and a quarter note D60. The hundred and fortieth measure contains a quarter note E60, a quarter note F#60, and a quarter note G60. The hundred and forty-first measure contains a quarter note A60, a quarter note B60, and a quarter note C61. The hundred and forty-second measure contains a quarter note D61, a quarter note E61, and a quarter note F#61. The hundred and forty-third measure contains a quarter note G61, a quarter note A61, and a quarter note B61. The hundred and forty-fourth measure contains a quarter note C62, a quarter note D62, and a quarter note E62. The hundred and forty-fifth measure contains a quarter note F#62, a quarter note G62, and a quarter note A62. The hundred and forty-sixth measure contains a quarter note B62, a quarter note C63, and a quarter note D63. The hundred and forty-seventh measure contains a quarter note E63, a quarter note F#63, and a quarter note G63. The hundred and forty-eighth measure contains a quarter note A63, a quarter note B63, and a quarter note C64. The hundred and forty-ninth measure contains a quarter note D64, a quarter note E64, and a quarter note F#64. The hundred and fiftieth measure contains a quarter note G64, a quarter note A64, and a quarter note B64. The hundred and fifty-first measure contains a quarter note C65, a quarter note D65, and a quarter note E65. The hundred and fifty-second measure contains a quarter note F