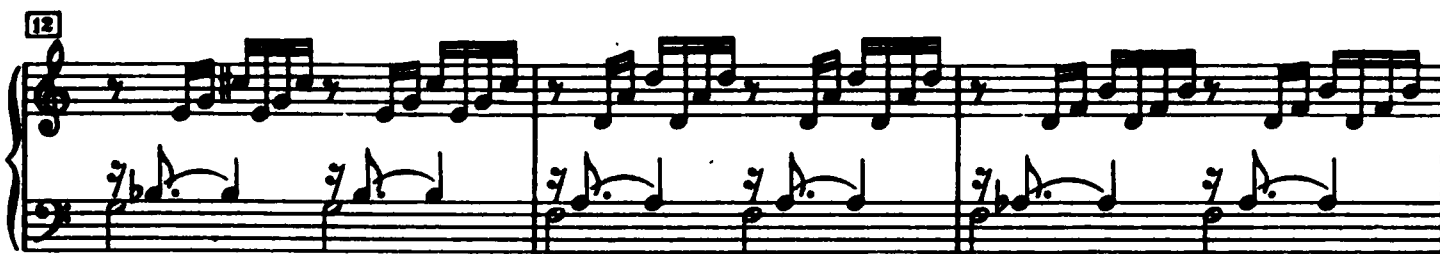
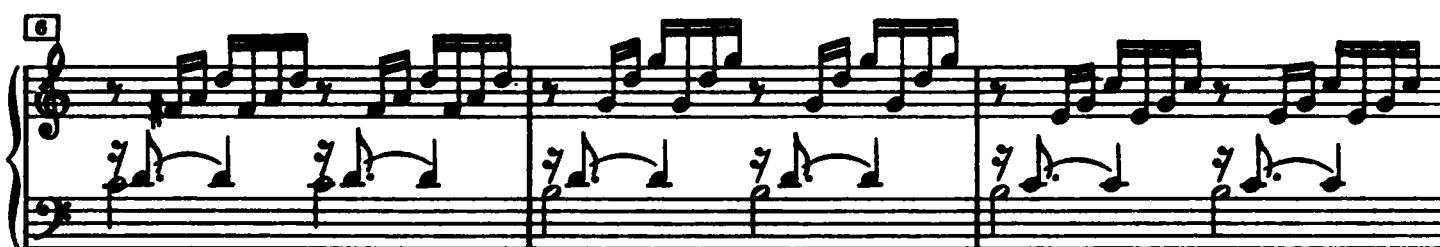
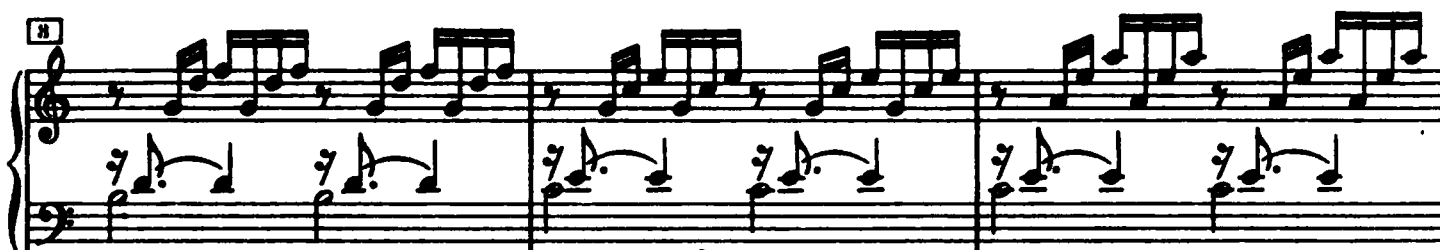


## ERSTER TEIL

## Praeludium I

Johann Sebastian Bach  
(1685 - 1750)

18



21



24



27



30



33



## Fuga I

a 4 Voci

This image displays the piano accompaniment for a musical piece titled "Fuga I" for four voices. The score is organized into five systems, each consisting of a grand staff (treble and bass clefs). The key signature is one flat (B-flat major or D minor), and the time signature is 4/4. The systems are numbered 1 through 10 at the beginning of each system. The notation includes various musical symbols such as notes, rests, accidentals, and dynamic markings. The first system (measures 1-3) shows a complex texture with multiple voices. The second system (measures 4-6) continues the development of the themes. The third system (measures 7-9) features a more active bass line. The fourth system (measures 10-12) includes a key change to D minor, indicated by the natural sign on the B-flat in the bass staff. The fifth system (measures 13-15) concludes the page with a final cadence.

12

Handwritten musical score for 'The Rose Tree'. The score is written on two staves, treble and bass clef. The key signature is one sharp (F#). The melody is in the treble staff, and the bass line is in the bass staff. The music is in 4/4 time. The score includes various musical notations such as notes, rests, and accidentals. There are also some handwritten annotations above the staff, including the number '12' in a box at the beginning, and some numbers (4, 5, 2, 1, 3, 5, 2, 3, 4) above the notes, possibly indicating fingerings or measures. The score is written in ink on aged paper.

A musical score for the song 'The Rose Tree'. The score is written for a piano, with a treble and bass staff. The key signature is one flat (B-flat), and the time signature is 2/4. The score begins with a treble clef and a key signature of one flat. The first measure is marked with a box containing the number 17. The melody is written in the treble staff, and the accompaniment is in the bass staff. The score includes various musical notations such as eighth notes, quarter notes, and half notes, as well as fingerings and articulation marks. The piece concludes with a final cadence in the bass staff.

A musical score for the song 'The Rose Tree'. The score is written for a piano, with a treble and bass staff. The key signature is one sharp (F#), and the time signature is 2/4. The music is in common time, with a tempo marking of 'Allegretto'. The score consists of two systems. The first system has a treble staff with a melody and a bass staff with a piano accompaniment. The second system continues the melody and accompaniment. The melody is written in a treble clef, and the piano accompaniment is written in a bass clef. The score includes various musical notations such as notes, rests, and accidentals. The lyrics 'The Rose Tree' are written below the melody. The score is numbered 10 in the top left corner.

A musical score for the song "The Rose Tree". The score is written for a piano, with a treble and bass staff. The key signature is one flat (B-flat major or D minor). The time signature is 4/4. The score is divided into three measures. The first measure contains the first line of the melody and accompaniment. The second measure contains the second line. The third measure contains the third line. The melody is written in the treble staff, and the accompaniment is written in the bass staff. The score is numbered 22 in the top left corner.

25

Handwritten musical score for 'The Rose Tree'. The score is written on two staves, treble and bass clef. The melody is in the treble staff, and the accompaniment is in the bass staff. The key signature is one flat (B-flat). The time signature is 4/4. The score includes various musical notations such as eighth notes, quarter notes, and rests. There are also some handwritten annotations above the treble staff, possibly indicating fingerings or other performance instructions.