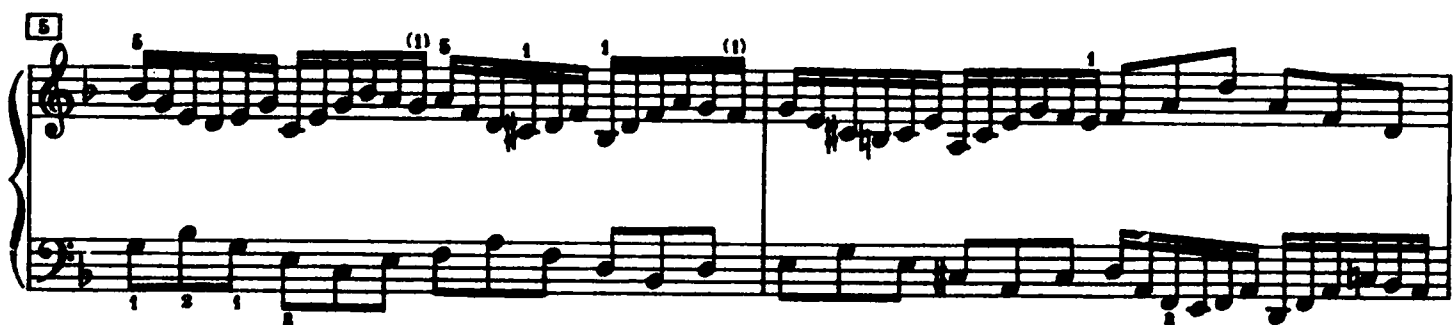
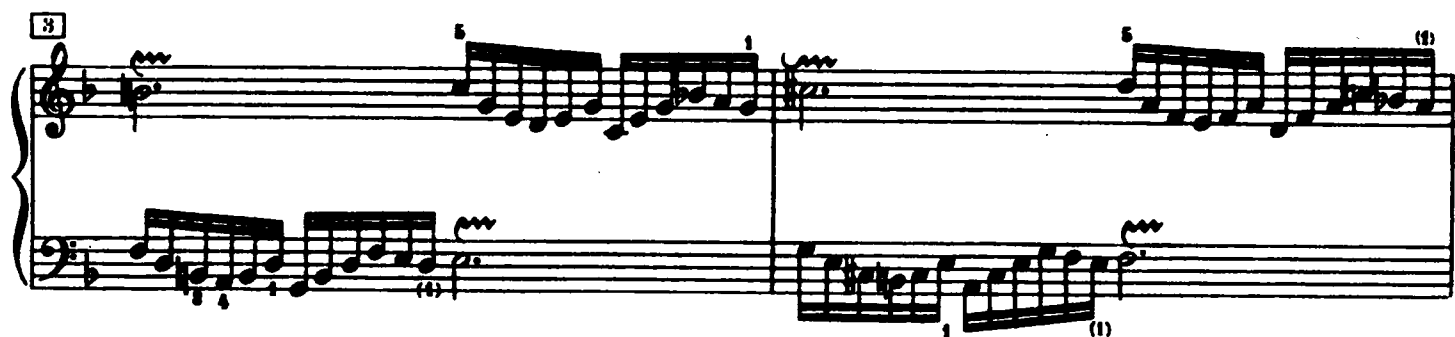


Praeludium XI



9

Measures 9 and 10 of a piano piece. Measure 9 features a treble clef with a half note G4 and a bass clef with a half note F3. Measure 10 contains a complex sixteenth-note pattern in the treble, starting on G4 and ascending to B4, with a corresponding bass line. Fingerings 1 and 5 are indicated. A first ending bracket labeled (1) spans the final two measures of the system.

11

Measures 11 and 12. Measure 11 shows a treble clef with a half note G4 and a bass clef with a half note F3. Measure 12 contains a complex sixteenth-note pattern in the treble, starting on G4 and ascending to B4, with a corresponding bass line. Fingerings 1 and 5 are indicated. A first ending bracket labeled (1) spans the final two measures of the system.

13

Measures 13 and 14. Measure 13 features a treble clef with a half note G4 and a bass clef with a half note F3. Measure 14 contains a complex sixteenth-note pattern in the treble, starting on G4 and ascending to B4, with a corresponding bass line. Fingerings 1 and 5 are indicated. A first ending bracket labeled (1) spans the final two measures of the system.

15

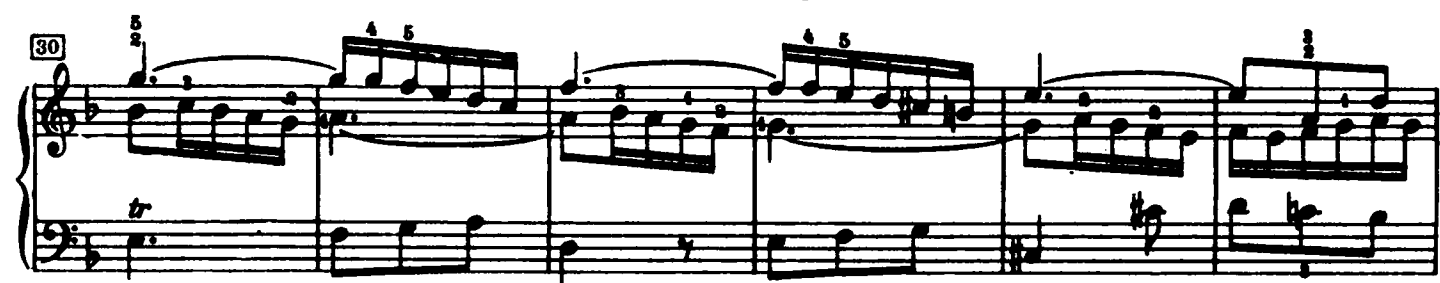
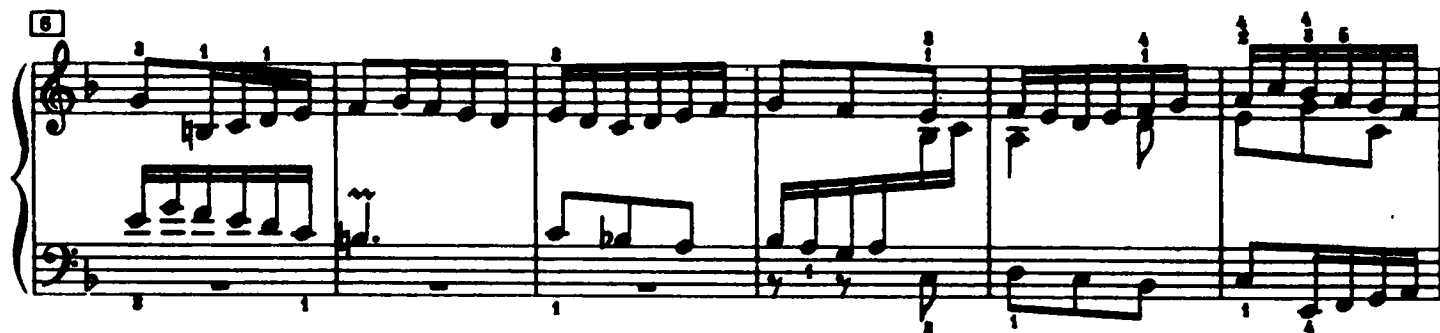
Measures 15 and 16. Measure 15 features a treble clef with a half note G4 and a bass clef with a half note F3. Measure 16 contains a complex sixteenth-note pattern in the treble, starting on G4 and ascending to B4, with a corresponding bass line. Fingerings 1 and 5 are indicated. A first ending bracket labeled (1) spans the final two measures of the system.

17

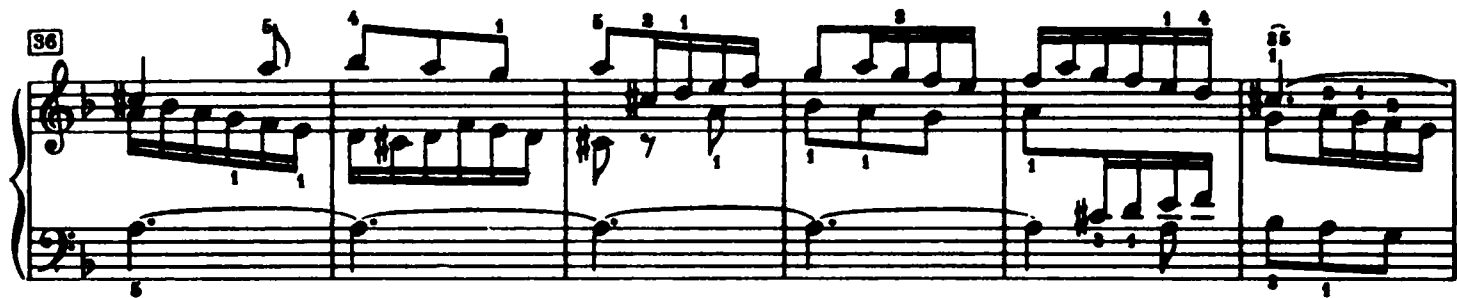
Measures 17 and 18. Measure 17 features a treble clef with a half note G4 and a bass clef with a half note F3. Measure 18 contains a complex sixteenth-note pattern in the treble, starting on G4 and ascending to B4, with a corresponding bass line. Fingerings 1 and 5 are indicated. A first ending bracket labeled (1) spans the final two measures of the system.

Fuga XI

a 3 Voci

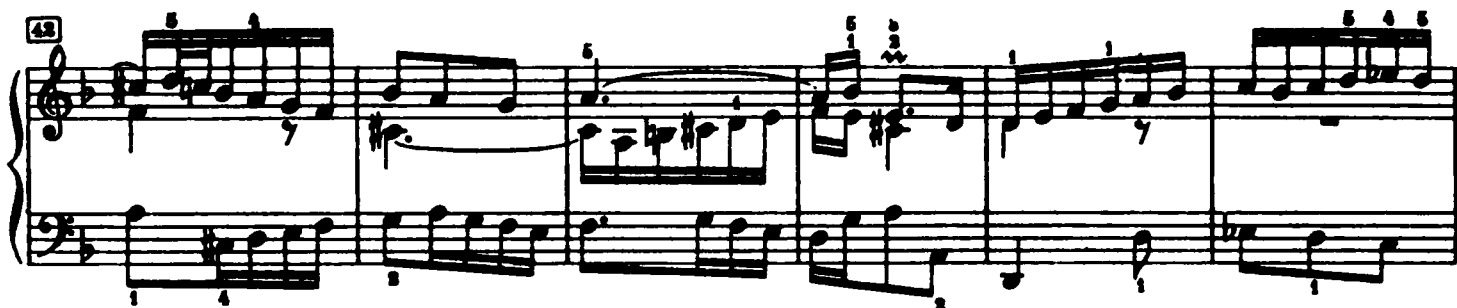


36



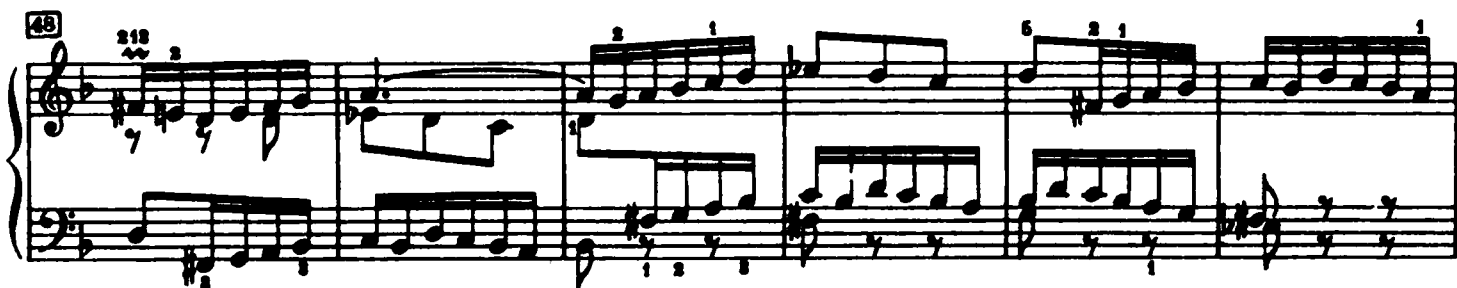
System 36: Treble and bass staves. Treble staff contains six measures of eighth-note and quarter-note patterns with fingerings 1, 2, 3, 4, 5. Bass staff contains six measures of eighth-note and quarter-note patterns with fingerings 1, 2, 3, 4, 5.

42



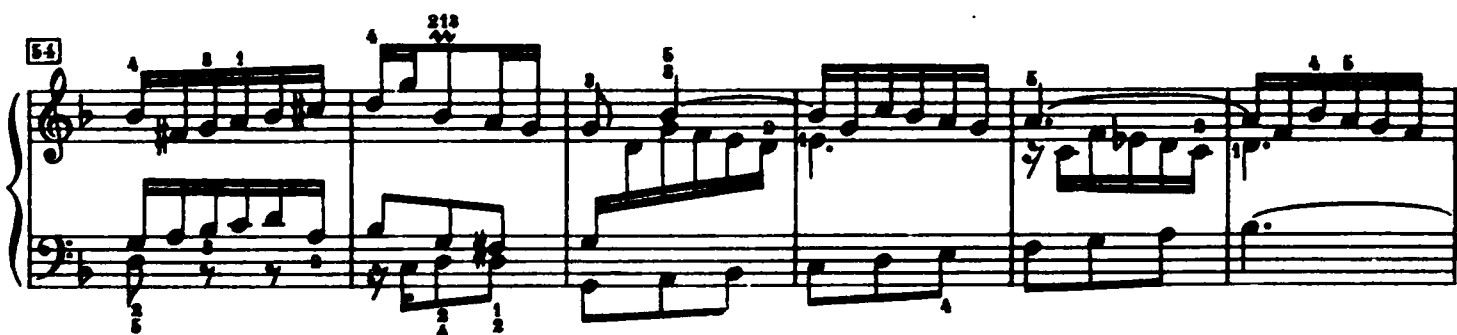
System 42: Treble and bass staves. Treble staff contains six measures of eighth-note and quarter-note patterns with fingerings 1, 2, 3, 4, 5. Bass staff contains six measures of eighth-note and quarter-note patterns with fingerings 1, 2, 3, 4, 5.

48



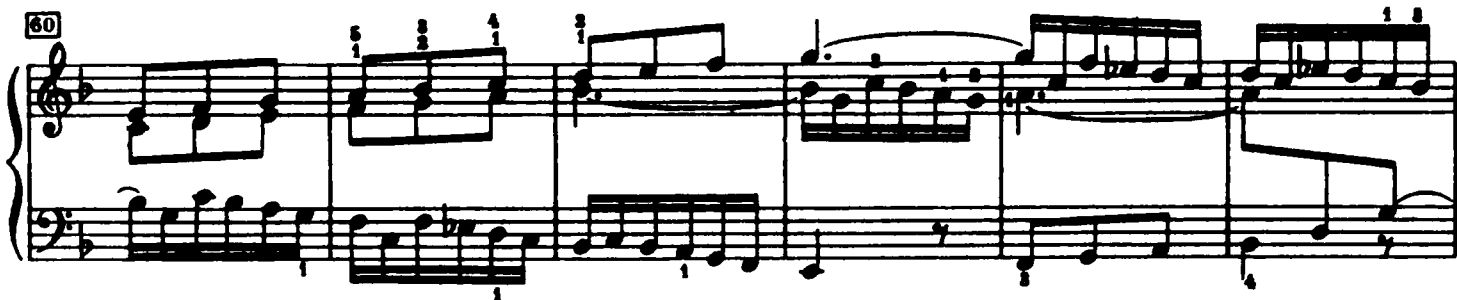
System 48: Treble and bass staves. Treble staff contains six measures of eighth-note and quarter-note patterns with fingerings 1, 2, 3, 4, 5. Bass staff contains six measures of eighth-note and quarter-note patterns with fingerings 1, 2, 3, 4, 5.

54



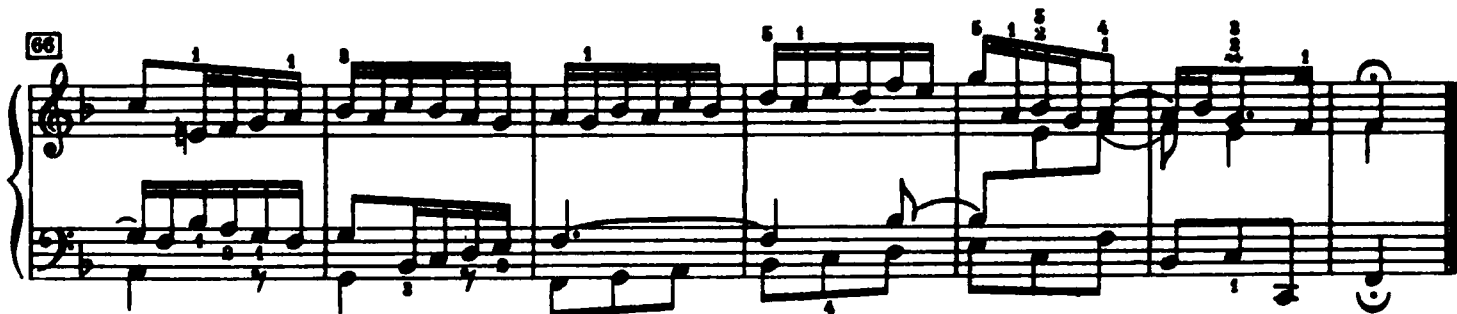
System 54: Treble and bass staves. Treble staff contains six measures of eighth-note and quarter-note patterns with fingerings 1, 2, 3, 4, 5. Bass staff contains six measures of eighth-note and quarter-note patterns with fingerings 1, 2, 3, 4, 5.

60



System 60: Treble and bass staves. Treble staff contains six measures of eighth-note and quarter-note patterns with fingerings 1, 2, 3, 4, 5. Bass staff contains six measures of eighth-note and quarter-note patterns with fingerings 1, 2, 3, 4, 5.

66



System 66: Treble and bass staves. Treble staff contains six measures of eighth-note and quarter-note patterns with fingerings 1, 2, 3, 4, 5. Bass staff contains six measures of eighth-note and quarter-note patterns with fingerings 1, 2, 3, 4, 5.