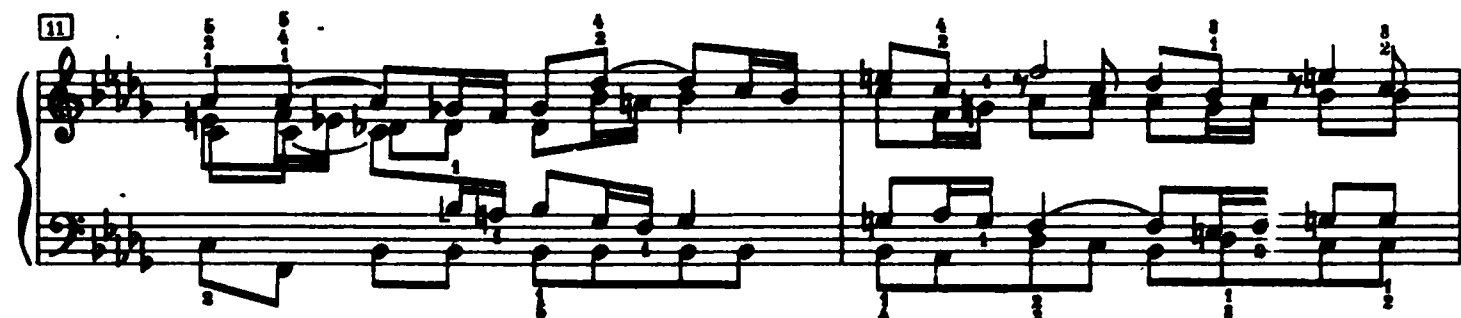
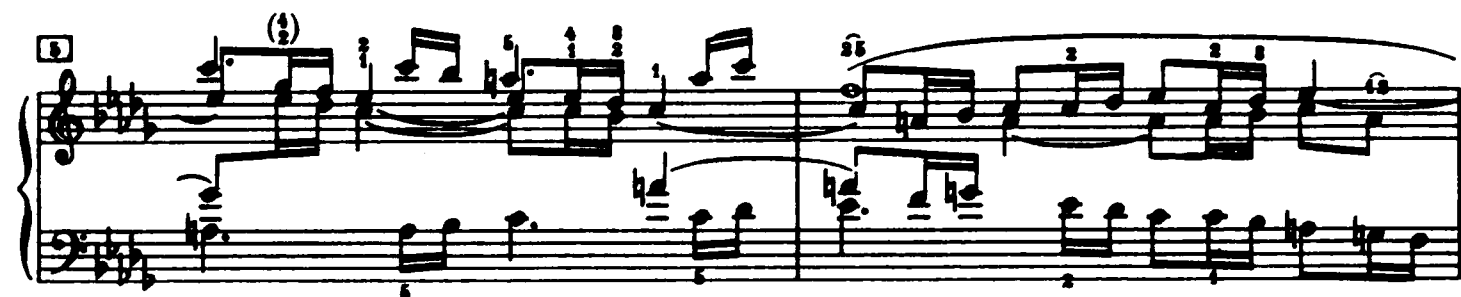
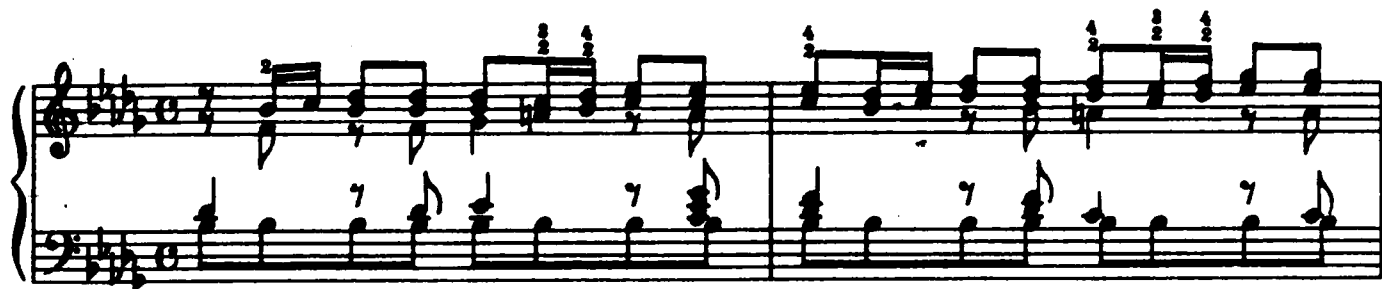


Praeludium XXII



18

Measures 18 and 19 of a musical score. The key signature has three flats (B-flat, E-flat, A-flat). Measure 18 features a treble staff with eighth-note chords and a bass staff with a single eighth note. Measure 19 continues with similar eighth-note chords in the treble and eighth notes in the bass. A fermata is placed over the final chord of measure 19.

16

Measures 16 and 17 of a musical score. The key signature has three flats. Measure 16 shows a treble staff with eighth-note chords and a bass staff with eighth notes. Measure 17 continues with eighth-note chords in the treble and eighth notes in the bass. A fermata is placed over the final chord of measure 17.

17

Measures 17 and 18 of a musical score. The key signature has three flats. Measure 17 features a treble staff with eighth-note chords and a bass staff with eighth notes. Measure 18 continues with eighth-note chords in the treble and eighth notes in the bass. A fermata is placed over the final chord of measure 18.

19

Measures 19 and 20 of a musical score. The key signature has three flats. Measure 19 features a treble staff with a half-note chord and a bass staff with eighth notes. Measure 20 continues with eighth-note chords in the treble and eighth notes in the bass. A fermata is placed over the final chord of measure 20.

21

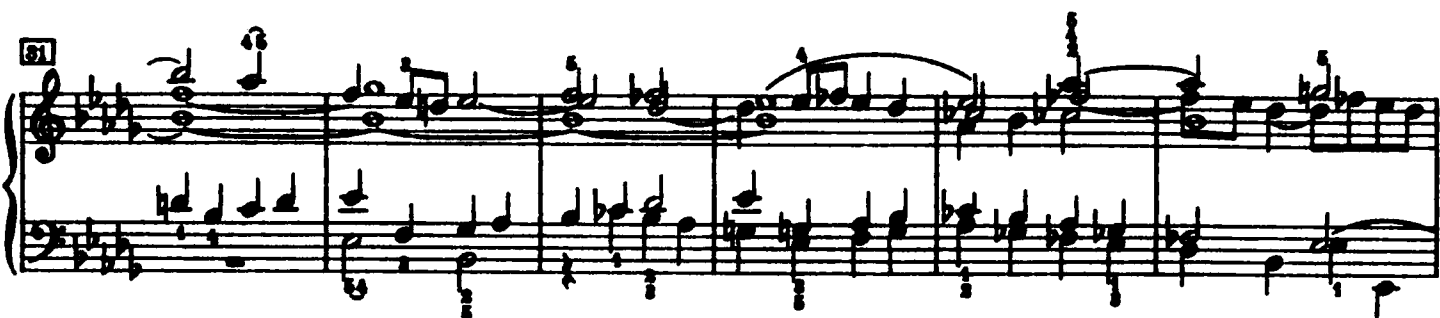
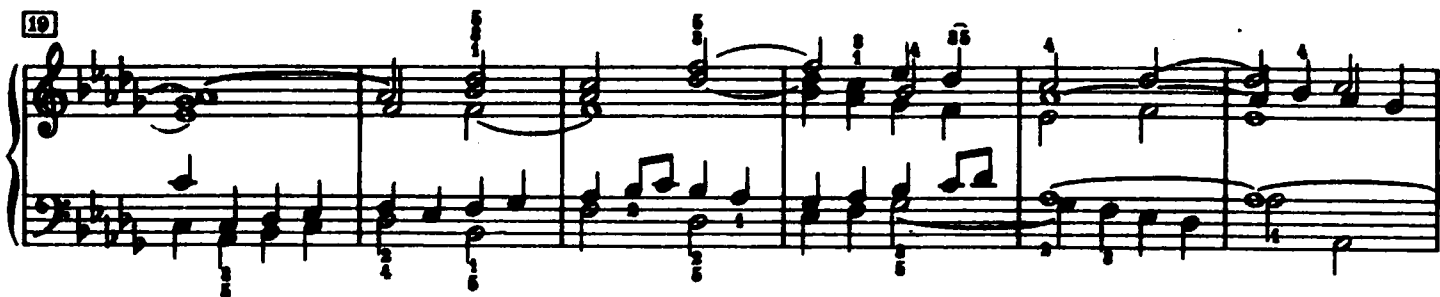
Measures 21 and 22 of a musical score. The key signature has three flats. Measure 21 features a treble staff with eighth-note chords and a bass staff with eighth notes. Measure 22 continues with eighth-note chords in the treble and eighth notes in the bass. A fermata is placed over the final chord of measure 22.

23

Measures 23 and 24 of a musical score. The key signature has three flats. Measure 23 features a treble staff with eighth-note chords and a bass staff with eighth notes. Measure 24 continues with eighth-note chords in the treble and eighth notes in the bass. A fermata is placed over the final chord of measure 24.

Fuga XXII

a 5 Voci



37



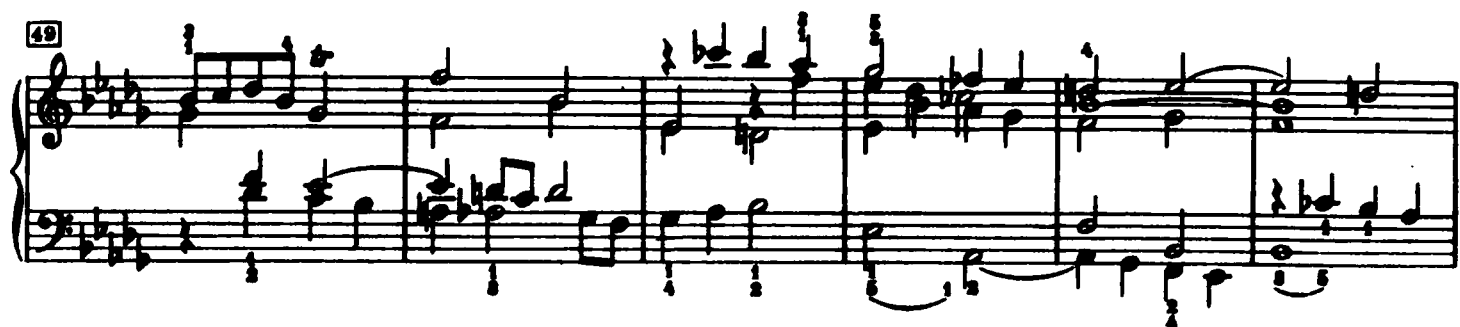
System 37: Treble and bass staves. Treble staff contains eighth and sixteenth notes with various accidentals. Bass staff contains eighth and sixteenth notes, some beamed together.

44



System 44: Treble and bass staves. Treble staff features a melodic line with eighth and sixteenth notes. Bass staff provides harmonic support with eighth and sixteenth notes.

49



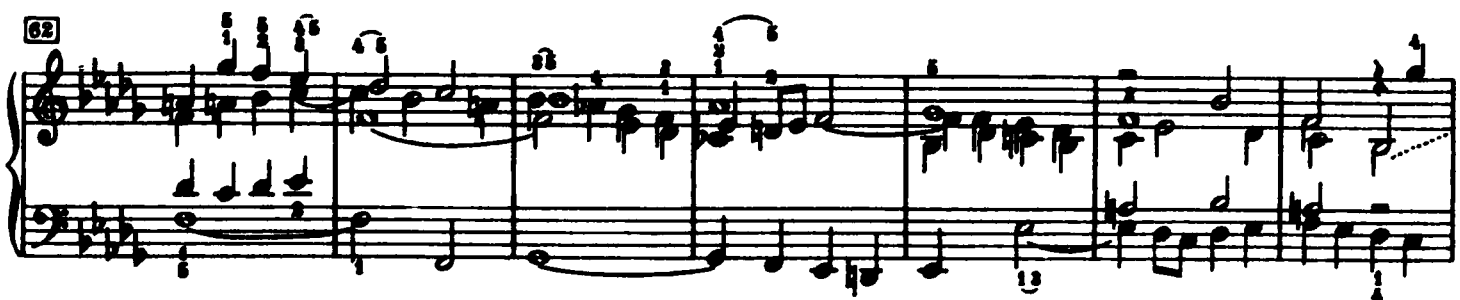
System 49: Treble and bass staves. Treble staff has a more active melodic line with many beamed eighth and sixteenth notes. Bass staff continues with a steady eighth-note accompaniment.

55



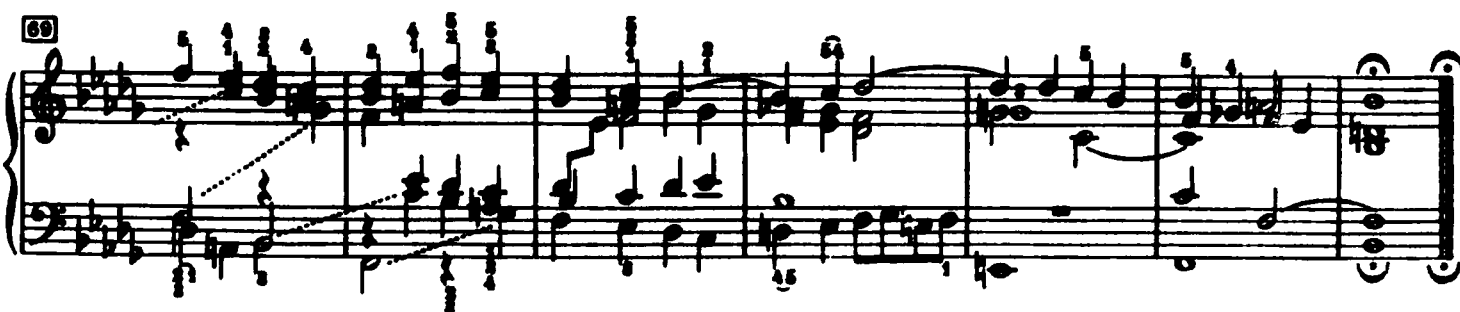
System 55: Treble and bass staves. Treble staff shows complex chordal textures with many beamed notes. Bass staff has a more rhythmic accompaniment with eighth and sixteenth notes.

62



System 62: Treble and bass staves. Treble staff features a melodic line with some slurs. Bass staff has a steady eighth-note accompaniment.

69



System 69: Treble and bass staves. Treble staff has a melodic line with some slurs. Bass staff has a steady eighth-note accompaniment. The system ends with a double bar line.