

## Praeludium XXIV

Andante

4

8

12

16

20

24

Measures 24-27 of a musical score in G major. The right hand features a melodic line with various ornaments and slurs, while the left hand provides a steady accompaniment. Measure numbers 24, 25, 26, and 27 are indicated above the staff.

28

Measures 28-31 of a musical score in G major. The right hand continues the melodic development with slurs and ornaments. The left hand maintains a consistent rhythmic pattern. Measure numbers 28, 29, 30, and 31 are indicated above the staff.

32

Measures 32-35 of a musical score in G major. The right hand shows more complex melodic figures with slurs. The left hand accompaniment remains steady. Measure numbers 32, 33, 34, and 35 are indicated above the staff.

36

Measures 36-39 of a musical score in G major. The right hand features a series of slurred notes and ornaments. The left hand accompaniment continues. Measure numbers 36, 37, 38, and 39 are indicated above the staff.

40

Measures 40-43 of a musical score in G major. The right hand has a melodic line with slurs and ornaments. The left hand accompaniment is consistent. Measure numbers 40, 41, 42, and 43 are indicated above the staff.

44

Measures 44-47 of a musical score in G major. The right hand concludes the melodic phrase with a final flourish. The left hand accompaniment ends with a steady rhythm. Measure numbers 44, 45, 46, and 47 are indicated above the staff.

## Fuga XXIV

a 4 Voci

Largo

Measures 1-4 of the Fuga XXIV. The music is in G major (one sharp) and common time (C). The tempo is marked 'Largo'. The score is written for a single system with a grand staff (treble and bass clefs). The melody in the treble clef begins with a half rest, followed by a quarter note G, a half note A, and a quarter note B. The bass clef provides a simple harmonic accompaniment with whole and half notes.

Measures 5-8 of the Fuga XXIV. The melody continues with eighth and sixteenth notes. Measure 6 includes a first ending bracket over a sixteenth-note figure. Measure 7 features a long, flowing sixteenth-note scale in the treble clef. Measure 8 concludes the phrase with a half note G and a half note F.

Measures 9-12 of the Fuga XXIV. The melody is characterized by rapid sixteenth-note passages. Measure 10 has a first ending bracket. Measure 11 features a complex sixteenth-note figure. Measure 12 ends with a half note G and a half note F.

Measures 13-16 of the Fuga XXIV. The melody continues with intricate sixteenth-note patterns. Measure 13 has a first ending bracket. Measure 14 features a complex sixteenth-note figure. Measure 15 has a first ending bracket. Measure 16 concludes the phrase with a half note G and a half note F.

Measures 17-20 of the Fuga XXIV. The melody continues with intricate sixteenth-note patterns. Measure 17 has a first ending bracket. Measure 18 features a complex sixteenth-note figure. Measure 19 has a first ending bracket. Measure 20 concludes the phrase with a half note G and a half note F.

17

20

23

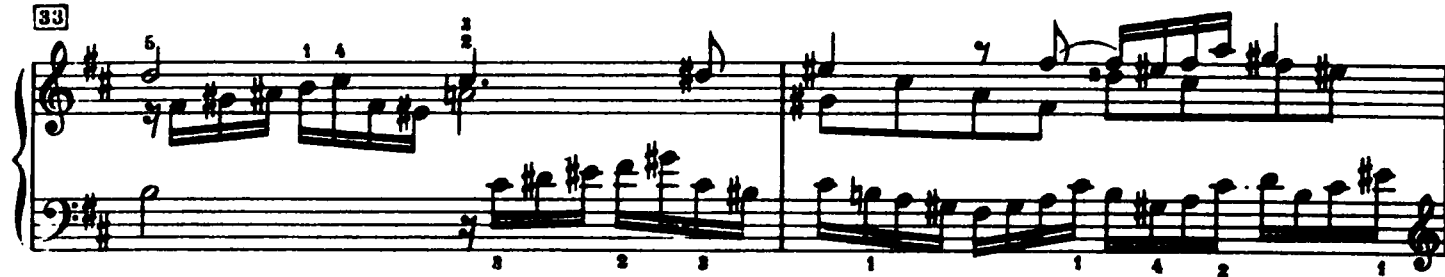
26

29

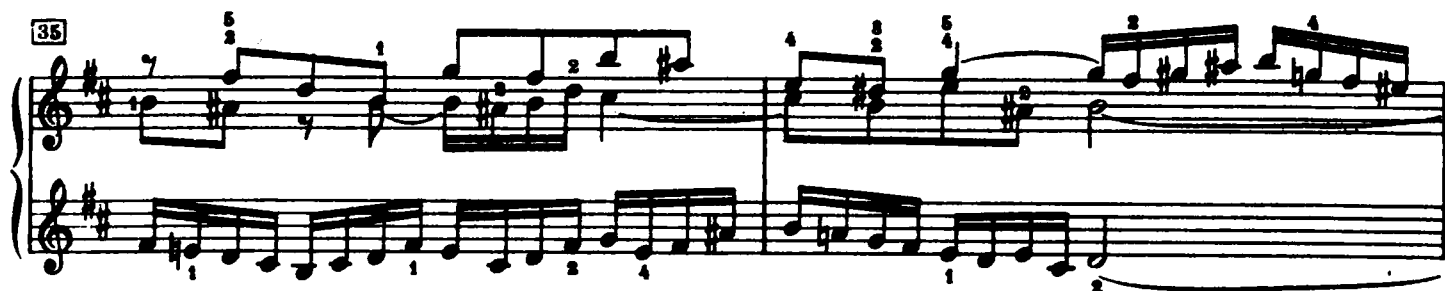
31

The image displays a page of piano sheet music, page 115, featuring six systems of music. Each system consists of a treble and bass staff joined by a brace. The music is in a key with two sharps (F# and C#) and a 2/4 time signature. The systems are numbered 17, 20, 23, 26, 29, and 31. The notation includes various musical symbols such as eighth and sixteenth notes, rests, and dynamic markings. Fingerings are indicated by numbers 1-5. Some measures contain slurs or ties. The bottom of the page shows a continuation of the music with a double bar line and a repeat sign.

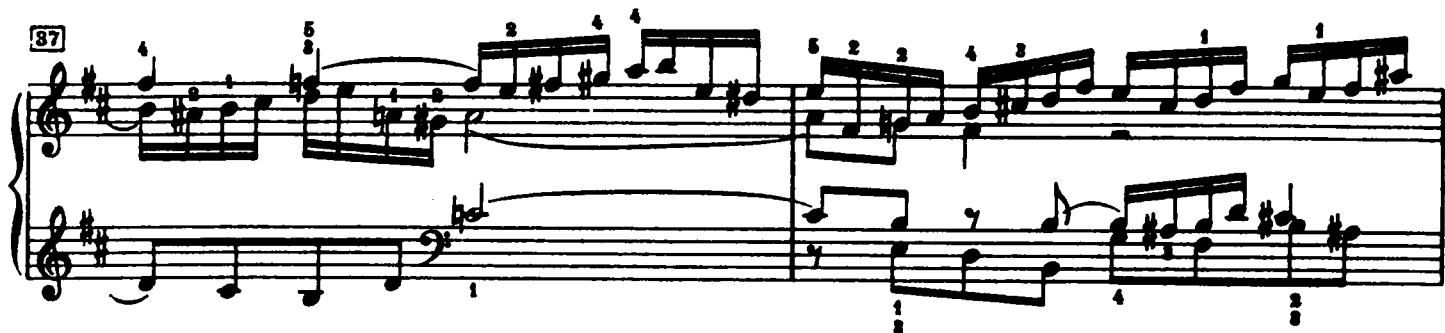
33



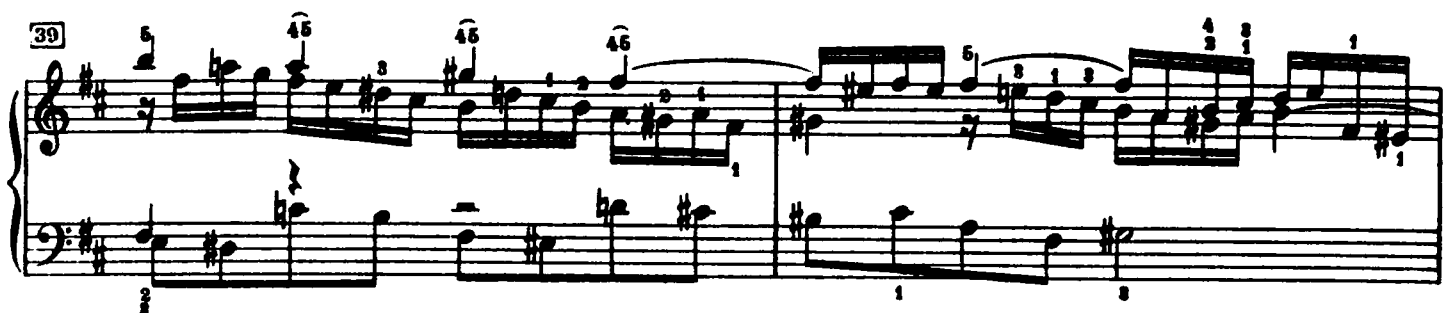
35



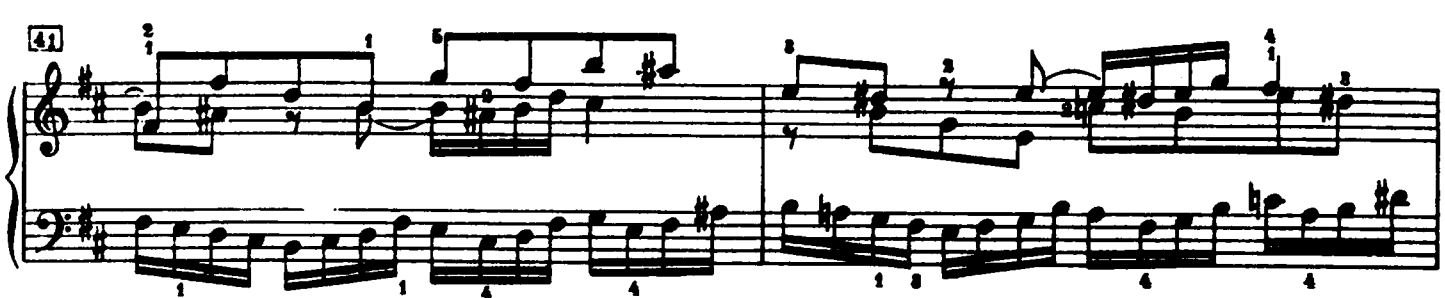
37



39



41



43



46

Measures 46-47. Treble clef, key of D major. Measure 46 contains a complex melodic line with triplets and sixteenth notes, and a bass line with eighth notes. Measure 47 continues the melody with a dotted half note and a final quarter note, while the bass line features a descending eighth-note pattern.

47

Measures 48-49. Measure 48 shows a melodic phrase with a dotted half note and a quarter note, with a bass line of eighth notes. Measure 49 features a melodic line with a dotted half note and a quarter note, and a bass line with a descending eighth-note pattern.

49

Measures 50-51. Measure 50 contains a melodic line with a dotted half note and a quarter note, and a bass line with a descending eighth-note pattern. Measure 51 features a melodic line with a dotted half note and a quarter note, and a bass line with a descending eighth-note pattern.

51

Measures 52-53. Measure 52 shows a melodic phrase with a dotted half note and a quarter note, with a bass line of eighth notes. Measure 53 continues the melody with a dotted half note and a quarter note, while the bass line features a descending eighth-note pattern.

53

Measures 54-55. Measure 54 contains a melodic line with a dotted half note and a quarter note, and a bass line with a descending eighth-note pattern. Measure 55 features a melodic line with a dotted half note and a quarter note, and a bass line with a descending eighth-note pattern.

55

Measures 56-57. Measure 56 shows a melodic phrase with a dotted half note and a quarter note, with a bass line of eighth notes. Measure 57 continues the melody with a dotted half note and a quarter note, while the bass line features a descending eighth-note pattern.

This page of musical notation contains five systems of piano music, numbered 57 through 65. The key signature is G major (one sharp) and the time signature is 3/4. The notation includes various musical elements such as eighth and sixteenth notes, rests, and fingerings. The first system (measures 57-58) shows a melodic line in the right hand with fingerings 1, 2, 4, 3, 2, 1, 3, 2, 1, 2, 3, 4, 5, 4, 3, 2, 1. The second system (measures 59-60) continues the melody with fingerings 4, 5, 4, 5, 3, 4, 3, 2, 1, 2, 3, 4, 5, 4, 3, 2, 1. The third system (measures 61-62) features a more complex melodic line with fingerings 4, 3, 2, 1, 2, 3, 4, 5, 4, 3, 2, 1, 2, 3, 4, 5, 4, 3, 2, 1. The fourth system (measures 63-64) shows a melodic line with fingerings 2, 1, 3, 2, 1, 2, 3, 4, 5, 4, 3, 2, 1. The fifth system (measures 65-66) concludes the page with a melodic line and fingerings 3, 2, 1, 2, 3, 4, 5, 4, 3, 2, 1, 2, 3, 4, 5, 4, 3, 2, 1.

67

Measures 67 and 68 of a piano piece. The key signature is one sharp (F#). Measure 67 features a treble staff with a half note chord (F#4, A4) and a bass staff with a half note chord (B3, D#3). Measure 68 continues with a treble staff containing eighth notes (F#4, A4, B4, A4, G#4, F#4) and a bass staff with eighth notes (B3, D#3, E4, F#4, G#4, A4). Fingering numbers are present above and below the notes.

69

Measures 69 and 70. Measure 69 has a treble staff with eighth notes (F#4, A4, B4, A4, G#4, F#4) and a bass staff with eighth notes (B3, D#3, E4, F#4, G#4, A4). Measure 70 has a treble staff with a half note chord (F#4, A4) and a bass staff with a half note chord (B3, D#3). Fingering numbers are present.

71

Measures 71 and 72. Measure 71 has a treble staff with eighth notes (F#4, A4, B4, A4, G#4, F#4) and a bass staff with eighth notes (B3, D#3, E4, F#4, G#4, A4). Measure 72 has a treble staff with a half note chord (F#4, A4) and a bass staff with a half note chord (B3, D#3). Fingering numbers are present.

78

Measures 78 and 79. Measure 78 has a treble staff with eighth notes (F#4, A4, B4, A4, G#4, F#4) and a bass staff with eighth notes (B3, D#3, E4, F#4, G#4, A4). Measure 79 has a treble staff with a half note chord (F#4, A4) and a bass staff with a half note chord (B3, D#3). Fingering numbers are present.

75

Measures 75 and 76. Measure 75 has a treble staff with eighth notes (F#4, A4, B4, A4, G#4, F#4) and a bass staff with eighth notes (B3, D#3, E4, F#4, G#4, A4). Measure 76 has a treble staff with a half note chord (F#4, A4) and a bass staff with a half note chord (B3, D#3). Fingering numbers are present.