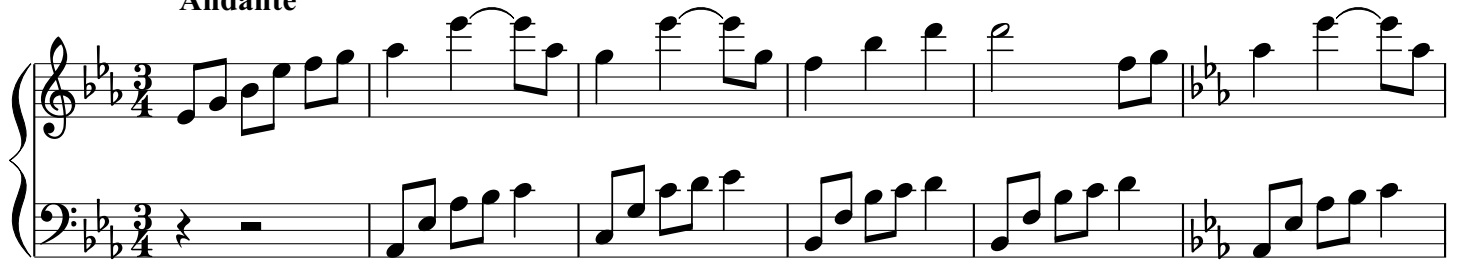


A Simple Life

Brian Crain

Andante



31

System 1 (Measures 31-36): Treble clef, key of B-flat major (two flats). The melody in the treble clef features eighth and quarter notes with slurs. The bass clef accompaniment consists of a steady eighth-note pattern.

37

System 2 (Measures 37-41): Continuation of the musical piece. The treble clef melody includes some sixteenth-note runs. The bass clef accompaniment remains consistent with the eighth-note pattern.

42

System 3 (Measures 42-46): Continuation of the musical piece. The treble clef melody features a half-note rest in measure 42. The bass clef accompaniment continues with the eighth-note pattern.

47

System 4 (Measures 47-52): Continuation of the musical piece. The treble clef melody includes a half-note rest in measure 47 and a whole-note chord in measure 52. The bass clef accompaniment continues with the eighth-note pattern.

53

System 5 (Measures 53-58): Continuation of the musical piece. The treble clef melody includes a half-note rest in measure 53 and a whole-note chord in measure 58. The bass clef accompaniment continues with the eighth-note pattern.

59

System 1 (Measures 59-63): Treble clef, key signature of two flats (B-flat, E-flat). The melody in the treble clef features eighth and sixteenth notes with various rests and ties. The bass clef accompaniment consists of a steady eighth-note pattern.

64

System 2 (Measures 64-68): Continuation of the musical system. The treble clef melody continues with similar rhythmic patterns, including some ties. The bass clef accompaniment remains consistent with the eighth-note pattern.

69

System 3 (Measures 69-73): Continuation of the musical system. The treble clef melody includes some whole notes and rests. The bass clef accompaniment continues with the eighth-note pattern.

75

System 4 (Measures 75-79): Continuation of the musical system. The treble clef melody features more complex phrasing with ties and slurs. The bass clef accompaniment continues with the eighth-note pattern.

81

System 5 (Measures 81-85): Continuation of the musical system. The treble clef melody includes some whole notes and rests. The bass clef accompaniment continues with the eighth-note pattern.

87

Measures 87-92: Treble clef, key signature of two flats (B-flat, E-flat). Measure 87: quarter notes G4, A4, B-flat4, C5, quarter note D5, quarter note E5, quarter note F5, quarter note G5. Measure 88: quarter notes A4, B-flat4, C5, D5, quarter note E5, quarter note F5, quarter note G5, quarter note A5. Measure 89: quarter notes B-flat4, C5, D5, E5, quarter note F5, quarter note G5, quarter note A5, quarter note B5. Measure 90: quarter notes C6, B5, A5, G5, quarter note F5, quarter note E5, quarter note D5, quarter note C5. Measure 91: quarter notes B4, A4, G4, F4, quarter note E4, quarter note D4, quarter note C4, quarter note B3. Measure 92: quarter notes A3, G3, F3, E3, quarter note D3, quarter note C3, quarter note B2, quarter note A2.

93

Measures 93-96: Treble clef, key signature of two flats (B-flat, E-flat). Measure 93: quarter notes G4, A4, B-flat4, C5, quarter note D5, quarter note E5, quarter note F5, quarter note G5. Measure 94: quarter notes A4, B-flat4, C5, D5, quarter note E5, quarter note F5, quarter note G5, quarter note A5. Measure 95: quarter notes B-flat4, C5, D5, E5, quarter note F5, quarter note G5, quarter note A5, quarter note B5. Measure 96: quarter notes C6, B5, A5, G5, quarter note F5, quarter note E5, quarter note D5, quarter note C5.