

PHANTASIESTÜCK

Fantasy Piece

Piece de Fantaisie

Arranged for
Piano Soloby
MICHAEL ZADORABy
FRANZ SCHUBERT

Allegro ma non troppo



This page of musical notation is for a piano piece, featuring five systems of staves. The key signature consists of two flats (B-flat and E-flat), and the time signature is common time (C). The notation includes various musical symbols such as notes, rests, beams, and dynamic markings.

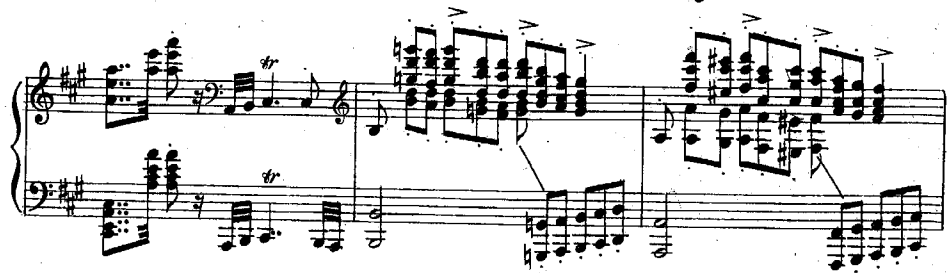
The first system shows a melody in the right hand and a bass line in the left hand. The second system includes dynamic markings *ff* (fortissimo) and *pp* (pianissimo). The third system features a *p* (piano) marking. The fourth system continues the melodic and harmonic development. The fifth system concludes with a *f* (forte) marking and a final cadence.

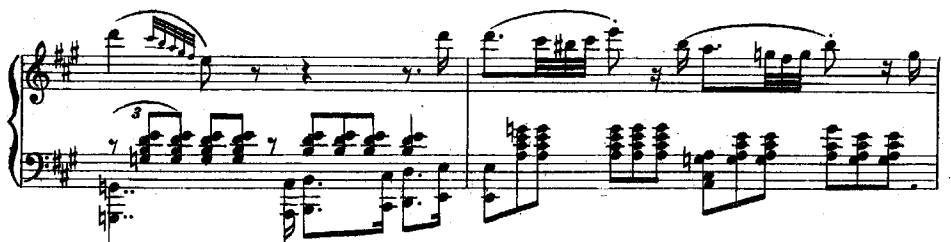
This page of musical notation, numbered 6, contains six systems of piano music. The notation is written for piano, with treble and bass staves joined by a brace. The key signature is B-flat major (two flats). The first system features a complex texture with many beamed sixteenth and thirty-second notes, and some triplets. The second system continues this intricate pattern. The third system shows a more rhythmic, march-like feel with steady eighth-note patterns in both hands. The fourth system introduces a change in texture, with a more active bass line and a melodic line in the treble. The fifth system features a prominent melodic line in the treble, marked *pp* (pianissimo), and a supporting bass line. The sixth system concludes with a melodic line in the treble and a bass line that includes some chromatic movement. The notation is dense and detailed, with various articulations and dynamic markings.



This page of musical notation consists of six systems of grand staves, each with a treble and bass clef. The key signature is three flats (B-flat, E-flat, A-flat). The notation includes various musical markings and dynamics:

- System 1:** The first measure of the treble staff is marked *pp* (pianissimo). The bass staff features a continuous eighth-note accompaniment.
- System 2:** Continues the melodic and accompanimental lines from the first system.
- System 3:** The treble staff has a measure with a whole rest, while the bass staff continues its accompaniment.
- System 4:** The word *Tranquillo* is written above the treble staff. The word *ritard.* (ritardando) is written below the bass staff. The system concludes with a double bar line and a repeat sign.
- System 5:** Features a more active treble staff with sixteenth-note passages, while the bass staff has a simpler accompaniment.
- System 6:** The final system on the page, showing a continuation of the melodic and accompanimental themes.

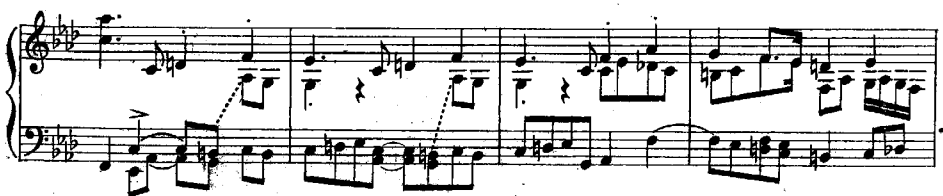




This page of musical notation, numbered 11, contains six systems of piano music. Each system consists of a grand staff with a treble and bass clef. The music is written in a key signature of two sharps (F# and C#). The notation includes various musical elements such as notes, rests, and dynamic markings. The first system begins with a treble clef and a key signature of two sharps. The second system continues the melody and accompaniment. The third system features a forte (ff) dynamic marking in the treble and a piano (pp) dynamic marking in the bass. The fourth system includes a fermata over a measure in the treble. The fifth system shows a change in the bass line with a new melodic line. The sixth system concludes the page with a final cadence in the bass line.

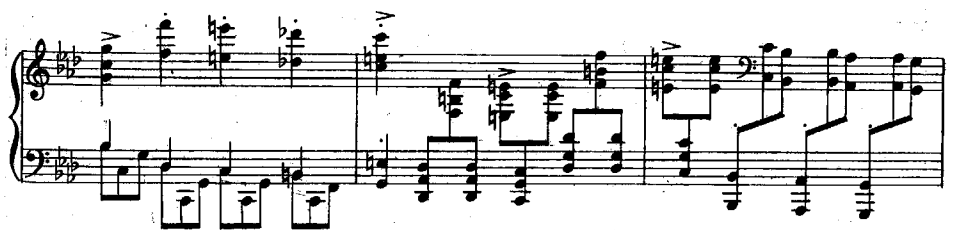


Tempo I.



13

musical score, page 13, featuring piano and bass staves with various musical notations including triplets, slurs, and a crescendo marking.



The image displays a page of musical notation, likely for a piano piece, consisting of six systems of staves. Each system contains a treble staff and a bass staff. The key signature is three flats (B-flat, E-flat, A-flat). The notation includes various musical elements such as notes, rests, and dynamic markings.

Key features of the notation include:

- Dynamic Markings:** The instruction *sempre forte* is written above the first staff.
- Accents:** Many notes are marked with accents (^).
- Ornaments:** Some notes in the first staff have small vertical lines above them, possibly indicating ornaments or grace notes.
- Handwritten Fingerings:** In the first staff, the bass line has handwritten numbers 5, 1, 5, 3, 2, 1, 5, 4, 3, 2, 1 below the notes, indicating fingerings.
- Rehearsal Marks:** Small vertical lines with the letter 'b' are placed at the beginning of the first staff of each system, likely indicating rehearsal marks.
- Phrasing:** Slurs and ties are used to group notes and indicate phrasing across measures.

This page of musical notation consists of six systems of staves, each with a treble and bass clef. The key signature is B-flat major (two flats). The notation includes various chords, arpeggios, and melodic lines. Dynamic markings include *p* (piano), *cresc.* (crescendo), and *sf* (sforzando). Performance instructions include *senza ritard.* (without slowing down) and a first ending bracket labeled *1*. The music is written in a style typical of early 20th-century piano repertoire.