

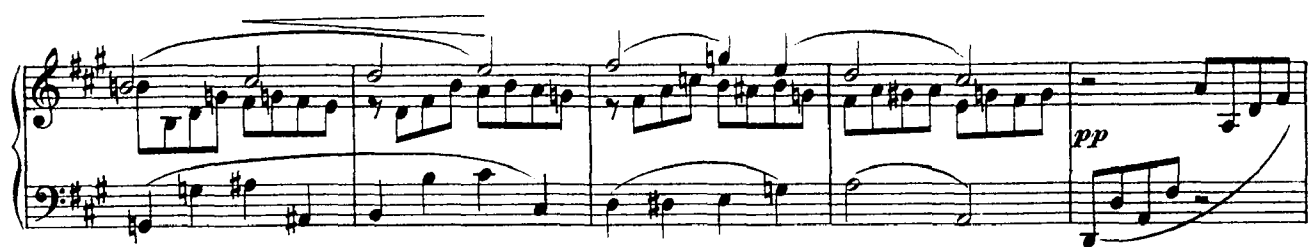
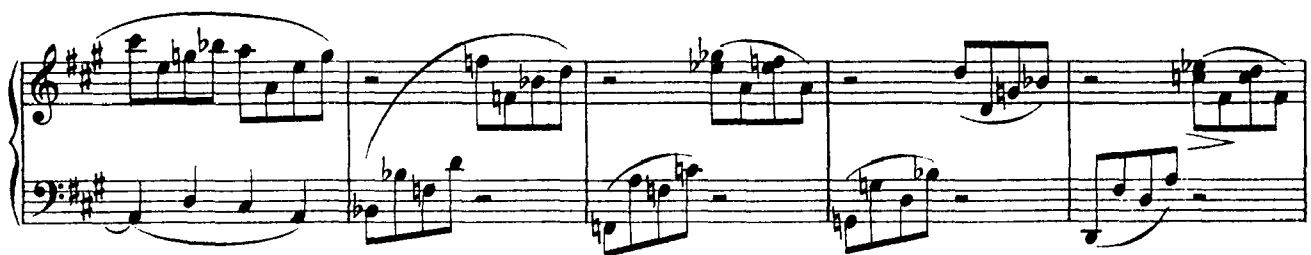
Schubert

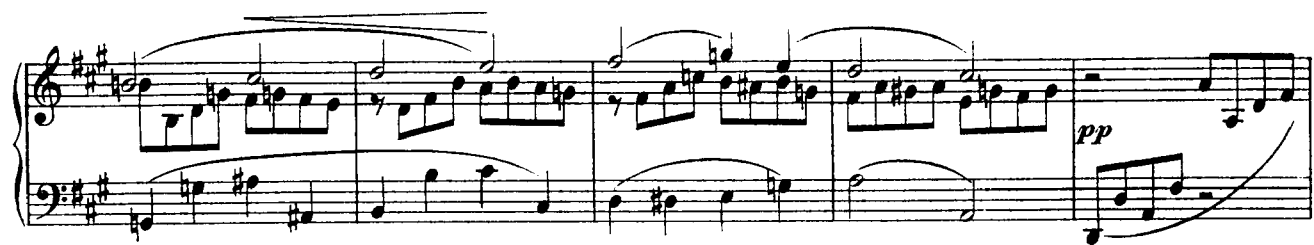
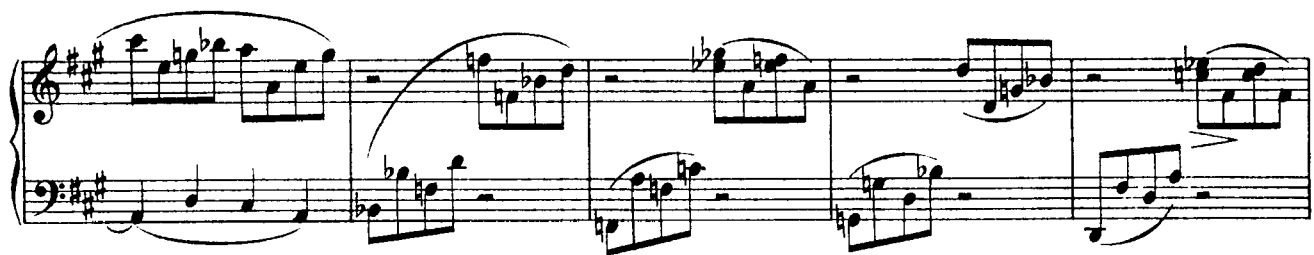
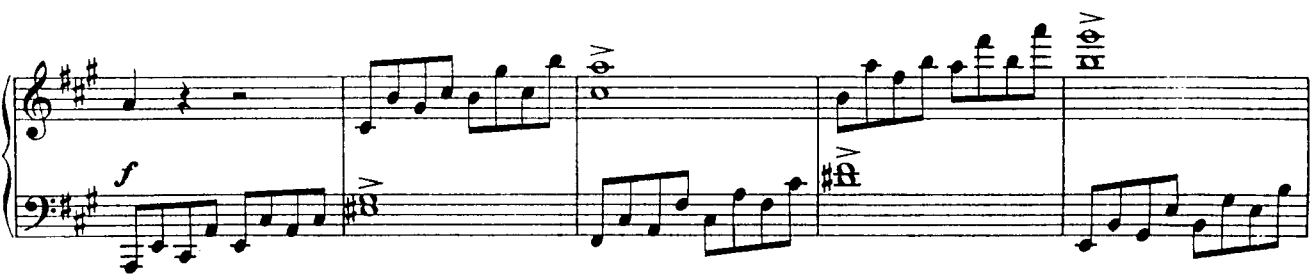
D.571

Sonata fis-moll (fragment of 1st movt only)

*Allegro moderato*

The image displays a musical score for the first movement of Schubert's Sonata in F minor, D. 571. The tempo is marked 'Allegro moderato'. The score is written for piano (pp) and consists of six systems of music. Each system contains a grand staff with a treble and bass clef. The key signature is three sharps (F#, C#, G#). The notation includes various musical symbols such as notes, rests, slurs, and dynamic markings. The first system begins with a piano (pp) marking and a tempo indication of 'Allegro moderato'. The score shows a fragment of the first movement, characterized by a steady eighth-note accompaniment in the bass and a more melodic line in the treble.





This page of musical notation consists of six systems, each with a treble and bass staff. The key signature is three sharps (F#, C#, G#). The notation includes various musical elements such as notes, rests, and dynamic markings. The first system shows a melodic line in the treble and a supporting bass line. The second system continues the melodic development. The third system introduces a more complex texture with multiple voices. The fourth system features a melodic line with a 'pp' (pianissimo) marking. The fifth system includes a 'dim.' (diminuendo) marking and a first ending bracket. The sixth system shows a second ending bracket and a 'pp' marking. The notation is written in a clear, professional style with standard musical symbols.

1.

2.

pp

dim.